

Eritrea: Essential Education Indicators 2014-15



**Ministry of education
Asmara , Eritrea
December 2015**

Table of contents

Contents	Page
I. Introduction and executive summary.....	1
1. Introduction	1
2. Executive Summary	2
3. Data channels	3
II. Important notes.....	3-4
1. School system	3
2. Definitions	3-4
III. Introductory information.....	5
IV. Pre-primary level.....	7
1. Pre-primary schools	7
2. Pre-primary enrolment	8
3. Pre-primary teachers	10
V. Elementary level.....	11
1. Background	11
2. Enrolment	11
3. Gross admission ratio	12
4. Net admission ratio	13
5. Over-age pupils in grade one	14
6. Under-age pupils in grade one	14
7. Children out of school	15
8. Gross enrolment ratio	16
9. Net enrolment ratio	17
10. Percentage of repeaters	18
11. Disparities among the zobas	18
VI. Middle level.....	19
1. Background	19
2. Enrolment	19
3. Gross enrolment ratio	20
4. Net enrolment ratio	22
5. Percentage of repeaters	23
VII. Secondary level.....	23
1. Background	23
2. Enrolment	23
3. Gross enrolment ratio	24
4. Net enrolment ratio	25
5. Percentage of repeaters	26
VII. Internal efficiency.....	27
1. Length of school year	27
2. All grades flow rate	27
3. Elementary level: Flow rate	28
4. Middle level: Flow rate	28
5. Secondary level: Flow rates	29
6. Elementary level: Zobas flow rates	29
7. Middle level: Zoba flow rate	30
8. Secondary level: Zoba flow rate	31
7. Elementary level: Cohort reconstruction – National and zobas by sex	32

Content	Page
IX Teaching staff: Elementary, middle and secondary level	35
1. Pupil/teachers ratio: Elementary, middle and secondary level.	35
2. Teachers' qualification	35
3. Female teachers	36
X Urban/Rural Enrolment 2013/14.....	37
XI Age-Specific Enrolment 2013/14.....	38

Charts and figures

Chart 1. Pre-primary: Enrolment by year and gender.....	9
Chart 2. Elementary level: Enrolment by zoba and gender.....	12
Chart 3. Elementary level: Gross and net admission ratio.....	13
Chart 4. Elementary level: Enrolment by year and gender.....	15
Chart 5. Elementary level: Gross enrolment ratio by year.....	16
Chart 6. Elementary level: Net enrolment ratio by year.....	17
Chart 7. Elementary level: Gross enrolment ratio by zoba	19
Chart 8. Middle level: Enrolment by zoba and gender.....	20
Chart 9. Middle level: Enrolment by year and gender.....	21
Chart 10. Secondary level: Enrolment by zoba and gender.....	24
Chart 11. Secondary level: Enrolment by year and gender.....	25
Chart 12. Secondary level: GER and NER by gender and year.....	26
Chart 13. Elementary level: Hypothetical cohort reconstruction (constant) – Eritrea.....	32
Chart 14. Elementary level: Average length of study per student (ALSS) by zoba.....	33
Chart 15. Percentage of wastage due to dropout and repetition by zoba.....	33

Tables

Table 1. Enrolment: level and gender by year, 1991/92-2014/15.....	5
Table 2. Teachers: level and gender by year, 1991/92-2014/15.....	6
Table 3. Enrolment and percentage distribution of non-gov schools by level and year	7
Table 4. Pre-primary level: Location and ownership by zoba, 2014/15.....	7
Table 5a Pre-primary level: Gross enrolment ratio by year, 1991/92-2014/15.....	8
Table 5b Pre-primary level: Deviation from national GER by zoba, 2014/15.....	8
Table 6a Pre-primary level: Net enrolment ratio by year, 2014/15.....	9
Table 6b Pre-primary level: Deviation from national NER by zoba, 2014/15.....	9
Table 7. Pre-primary level: Gender and teacher's training status by zoba, 2014/15.....	10
Table 8. Pre-primary level: Pupil/teacher ratio, 1991/92-2014/15.....	10
Table 9. Pre-primary level: Percentage of female teachers, 1991/92-2014/15	11
Table 10. Elementary level: Percentage of change by zoba and gender, 2014/15	11
Table 11. Elementary level: Gross admission ratio by year, 1991/92-2014/15.....	12
Table 12. Elementary level: Net admission ratio by year, 1991/92-2014/15.....	13
Table 13. Elementary level: Percentage of over-age pupils in grade one, 1991/92-2014/15.....	14
Table 14. Elementary level: Percentage of under-age pupils in grade one, 1991/92-2014/15.....	14
Table 15. Elementary level: Percentage of children out of school, 1991/92-2014/15.....	15
Table 16. Elementary level: Gross enrolment ratio by year, 1991/92-2014/15.....	16
Table 17. Elementary level: Net enrolment ratio by year, 1991/92-2014/15.....	17
Table 18. Elementary level: Percentage of repeaters by gender and year, 1991/92-2014/15.....	18
Table 19. Elementary level: Deviation from national GER by zoba, 2014/15.....	18
Table 20. Elementary level: Deviation from national NER by zoba, 2014/15.....	19
Table 21. Middle level: Percentage of change by zoba and gender, 2014/15.....	19
Table 22. Middle level: Gross enrolment ratio by year, 1991/92-2014/15.....	20
Table 23. Middle level: Deviation from national GER by zoba, 2014/15.....	21
Table 24. Middle level: Net enrolment ratio by year, 1991/92-2014/15.....	22
Table 25. Middle level: Deviation from national NER by zoba, 2014/15.....	22
Table 26. Middle level: Percentage of repeaters by year, 1991/92-2014/15.....	23
Table 27. Secondary level: Percentage of changes by zoba and gender, 2014/15.....	23
Table 28. Secondary level: Gross enrolment ratio by year, 1991/92-2014/15.....	24

Table 29.	Secondary level: Deviation from national GER by zoba, 2014/15.....	24
Table 30.	Secondary level: Net enrolment ratio by year, 1991/92-2014/15.....	25
Table 31.	Secondary level: Deviation from national NER by zoba, 2014/15.....	25
Table 32.	Secondary level: Percentage of repeaters by year, 1991/92-2014/15.....	26
Table 33.	Elementary level: Duration of school year, 2014/15.....	27
Table 34.	All grades: Flow rates by gender and grade 2014/15.....	27
Table 35.	Elementary level: Flow rate by age and gender, 2014/15.....	28
Table 36.	Middle level: Flow rate by age and gender, 2014/15.....	28
Table 37.	Secondary level: Flow rate by age and gender, 2014/15.....	29
Table 38.	Elementary level: Average flow rate 2014/15.....	29
Table 39.	Middle level: Average flow rate, 2014/15.....	30
Table 40.	Secondary level: Average flow rate, 2014/15.....	31
Table 41a	Eritrea elementary level: Wastage, survival and transition ratios by Zoba.....	33
Table 41b	Eritrea elementary level: Wastage, survival and transition ratios of male by Zoba.....	34
Table 41c	Eritrea elementary level: Wastage, survival and transition ratios of female by Zoba.....	34
Table 42.	Teachers: Gender and level by zoba, 2014/15.....	35
Table 43.	Pupil/teacher ratio by year and level, 1992/93-2014/15.....	35
Table 44.	Teachers' qualifications by level 1992/93- 2014/15.....	36
Table 45.	Number and percentage of female teachers by level 1991/92-2014/15.....	36
Table 46.	Urban/Rural Elementary enrolment 2014/15.....	37
Table 47.	Urban/Rural Middle enrolment 2014/15.....	37
Table 48.	Urban/Rural Secondary enrolment 2014/15.....	37
Table 49.	Age-specific enrolment 2014/15.....	38

I. Introduction and executive summary

1. Introduction

‘Eritrea: Essential Education Indicators is the official, annual education publication of the Ministry of Education (MoE) dealing with basic essential indicators. It is the 18th report produced by the Department of Research and Human Resource Development in terms of organization of schools in the six administrative zobas, the Zobas. The sources of information for this publication are annual school censuses carried out by Zoba education offices through standard questionnaires.

This publication covers data from Early Childhood Education (ECE) and General Education (Elementary, Middle and Secondary level). The main purpose of the 2014/15 publication is to provide useful, relevant, reliable and up-to-date information on education for various stakeholders within and outside the education sector.

The MoE believes that the data presented in this publication is by no means considered exhaustive. For further inclusion and refinement to be made, the Ministry of Education is working to improve the quality and coverage of the education statistics. Moreover, continuous efforts will be made to produce better and timely information.

This publication would not have been possible without the contribution of the six Zoba education offices and other educational institutions. The department remains deeply indebted to all for the efforts made to successfully finalize this publication.

The MoE truly appreciates to all those who provided feedback and other relevant input.

Please feel free to give your serviceable feedback regarding the content and form of this education abstract so the department will be able to enrich this publication.

Department of Research and HRD
Ministry of Education
Asmara

December 2015

2. Executive summary

In the academic year 2014/15, enrolment in elementary level increased by 0.02 percent and the increase is observed only in Maekel and Gash Barka. Enrolment in middle level decreased by 3.3 percent and enrolment in secondary level decreased by 15.8 percent respectively as compared to previous academic year (2013/14). A decrease in enrolment in middle level is observed in four Zobas (Anseba, Debub, Gash barka and Semenawi keih bahri) and a decrease in enrolment in secondary level is observed in all zobas except in Debubawi keih bahri.

In the academic year of 2014/15, enrolment of girls in elementary increased by 0.5, in middle and secondary levels decreased by 2.1 and 12.7 percent respectively.

As compared to the academic year 2013/14, in the academic year 2014/15 national enrolment of girls and boys decreased by 2.5 and 4.6 respectively. The participation ratio of girls is still lower than that of boys except in literacy programmes, continuing elementary education and elementary teacher education which is 89.2, 86.6, and 66.2 percent respectively. The gross enrolment ratios of females in pre-primary, elementary, middle and secondary levels were 18.0, 98.0, 72.4 and 28.2 percent respectively.

In pre-primary education, the number of students has decreased by 6.9 percent and number of teachers has decreased by 6.9 percent. The number of schools in pre-primary has increased by 1.7 percent. The number of schools by level in elementary, middle and secondary schools increased by 2.5, 1.4 and 2 percent respectively. The number of teachers in elementary, middle and secondary levels has decreased by 7.5, 8.2 and 11.8 percent respectively.

The gross national accessibility to schooling in 2014/15 was about 18.2 percent, 104.5 percent, 76.6 percent and 30 percent in pre-primary, elementary, middle and secondary levels respectively.

The subsequent sections of this publication/abstract show the overall situation of the education system at all levels as well as some statistical information obtained since 1991.

3. Data channels

The information in this statistical abstract is gathered mainly from three questionnaires named number 7, 8 and 9. The first two questionnaires consist of closed questions/items, in which schools and institutions send back the *November data* on Pre-primary, Elementary, Middle, and Secondary schools to the MoE. The expected time of completion of these questionnaires is April. In every academic year normally 100% of the questionnaires are collected.

Item questionnaire 9 cover a school's physical, financial and internal efficiency particulars. The expected time of completion of this Questionnaire is July, which is after the end of each academic year.

The Department assure users of this abstract that all necessary measures have been taken to make the information provided in this issue valuable and reliable.

Data in all tables, unless otherwise stated, refer to the academic year 2014/15. Table numbers are sub-grouped under corresponding sections. Charts are sequenced in a continuous ascending order throughout the abstract.

II. Important notes

We would like to remind users of our yearly abstracts that we have been using different school age estimations in our previous publications. From 2012 onwards our publications has been based on the new school age estimation made by the National Statistics Office (NSO).

1. School system

Level	Grade	Age
Pre-school	I, II	4-5
Elementary	1-5	6-10
Middle	6-8	11-13
Secondary	9-12	14-17

NB: - Official School age has changed starting from the academic year 2012/13

2. Definitions

2.1 Government schools are **schools** administered and financed by the Ministry of Education.

2.2 Non-government schools are schools administered and financed by institutions other than the Ministry of Education.

- **Types of Non government (Non-gov) schools are:-**

2.2.1 Community schools are schools administered by municipalities or local or foreign communities

2.2.2 Awkaf (Mahad) schools are schools administered by Awkaf (Islamic religion association).

2.3.3 Mission schools are schools administered by churches (Coptic, Catholic, and Protestant churches).

2.3 Special schools are schools for the deaf and the blind. There are two schools for the deaf, one in Keren and another in Asmara and one school for the blind in Asmara.

2.4 Number of schools by level:

A school having grades 1-12 is considered as three (1-5, 6-8, 9-12) schools by **level** regardless of being single **site**; schools having grades 1-8 are considered as two schools as it contains two levels (1-5 and 6-8) and the same for schools having grades 6-12.

2.5 Number of schools by site:

One single school compound or **site** may accommodate a combination of two or three level of schools but may be counted as one school **for purposes of specific location**. The number of schools by level is usually greater than the number of schools by site.

III. Introductory information

Tables 1 and 2 give the number of students and teachers of General Education, Asmara Community College of Education (ACCE) and Technical and vocational schools (Tech. and voc.) since 1992/93.

Table 1: Enrolment: Level and gender by year 1992/93-2014/15

Year	Level						Post secondary			
	Elementary		Middle		Secondary		ACCE		Tech. and voc.	
	F	T	F	T	F	T	F	T	F	T
1992/93	82,356	184,492	13,375	28,427	14,390	31,531	720	2,580	58	537
1993/94	92,536	208,199	14,652	32,781	13,324	32,756	54	398	60	589
1994/95	99,743	224,287	15,685	34,995	14,631	36,728	674	2,185	53	546
1995/96	108,254	241,725	18,103	39,751	15,475	39,151	9	93	59	536
1996/97	108,487	240,737	20,721	47,460	16,332	40,594	52	359	71	546
1997/98	111,930	247,499	24,154	57,152	16,417	41,615	87	478	69	406
1998/99	118,385	261,963	29,290	67,021	17,756	47,533	73	471	140	908
1999/00	133,045	295,941	33,284	74,317	22,093	59,626	129	606	147	1,018
2000/01	134,168	298,691	35,107	76,564	23,596	63,951	197	961	464	1,866
2001/02	146,218	330,278	34,667	80,882	25,054	70,183	169	1,022	393	1,992
2002/03	159,563	359,423	36,881	87,019	26,185	72,818	61	874	429	1,965
2003/04	165,954	374,997	49,224	122,966	22,952	69,401	474	474	531	1,917
2004/05	167,451	377,512	53,996	139,029	26,041	76,051	365	492	675	1,152
2005/06	161,875	364,263	57,448	148,082	27,293	77,644	N.A	N.A	881	2,060
2006/07	149,755	331,855	59,342	141,081	30,329	75,800	102	646	685	1,488
2007/08	140,792	314,034	60,265	144,031	34,088	83,411	177	630	2,581	6,094
2008/09	135,018	300,129	64,114	151,131	35,764	89,761	202	630	2,203	4,620
2009/10	129,218	286,021	66,930	151,702	39,306	95,076	160	563	1,690	4,012
2010/11	139,584	311,737	68,588	154,527	42,684	99,993	150	534	1,746	4,640
2011/12	149,841	334,245	74,812	167,928	40,216	95,152	141	620	2,018	4,680
2012/13	157,534	349,652	68,940	155,526	47,488	110,369	230	720	1,815	4,630
2013/14	162,984	361,604	67,541	152,005	50,558	115,422	201	642	2,363	4,717
2014/15	163,786	361,684	66,149	147,031	44,115	97,217	434	656	1,786	3,613

N.B this enrolment table includes students enrolled in regular/formal schools only

* ACCE stands for Asmara Community College of Education

* Tech. and voc. Stands for Technical and Vocational

Table 2: Teachers: Level and gender by year 1991/92-2014/15

Year	Elementary		Middle		Secondary		ACCE		Tech. and voc	
	F	T	F	T	F	T	F	T	F	T
1991/92	1,411	3,647	139	783	67	758	3	31	5	67
1992/93	1,841	4,954	143	854	93	905	6	87	4	75
1993/94	1,865	5,272	140	978	104	1,015	3	34	0	63
1994/95	1,974	5,583	139	948	108	1,081	3	44	2	74
1995/96	2,025	5,828	156	992	103	1,039	2	32	6	80
1996/97	1,977	5,476	170	1,017	106	942	6	33	1	79
1997/98	1,893	5,799	170	1,162	113	959	4	38	0	66
1998/99	1,951	5,576	149	1,208	112	982	3	38	4	101
1999/00	2,330	6,229	167	1,312	109	1,047	2	32	9	104
2000/01	2,710	6,668	160	1,377	115	1,188	11	37	9	173
2001/02	2,873	7,498	177	1,529	145	1,419	6	47	17	174
2002/03	2,756	7,692	178	1,614	140	1,277	5	46	69	265
2003/04	2,887	8,033	216	2,241	215	1,645	11	23	78	326
2004/05	3,166	7,942	245	2,449	215	1,609	4	25	16	169
2005/06	3,296	7,711	257	2,491	188	1,552	0	0	15	145
2006/07	3,305	6,933	245	2,478	208	1,778	12	41	10	169
2007/08	3,241	7,311	258	2,704	210	1,811	10	39	39	376
2008/09	3,144	7,802	331	3,352	267	2,292	10	41	39	389
2009/10	3,080	7,536	485	3,680	314	2,472	10	48	42	429
2010/11	3,124	7,704	532	3,707	374	2,561	11	36	46	414
2011/12	3,318	8,166	632	3,867	457	2,854	7	43	68	432
2012/13	3,252	8,680	639	3,621	557	3,076	18	38	68	432
2013/14	3,367	9,023	727	3,882	641	3,177	5	48	89	416
2014/15	3,002	8,346	675	3,563	631	2,800	6	48	99	418

Table 3. Enrolment and Percentage distribution of Non-gov. schools by level and year

Year	1-5			6-7			8-11		
	Non-gov.	T	%	Non-gov.	T	%	Non-gov.	T	%
1991/92	33,377	150,870	22.1	4,788	27,917	17.2	794	27,627	2.9
1992/93	31,513	184,492	17.1	5,174	28,427	18.2	1,740	31,531	5.5
1993/94	31,766	208,199	15.3	5,203	32,781	15.9	1,984	32,756	6.1
1994/95	30,398	224,287	13.6	4,992	34,995	14.3	2,530	36,728	6.9
1995/96	30,650	241,725	12.7	5,385	39,751	13.5	3,514	39,151	9.0
1996/97	29,578	240,737	12.3	5,841	47,460	12.3	3,313	40,594	8.2
1997/98	27,292	247,499	11.0	5,401	57,152	9.5	2,634	41,615	6.3
1998/99	29,153	261,963	11.1	5,417	67,021	8.1	2,094	47,533	4.4
1999/00	29,766	295,941	10.1	5,155	74,317	6.9	2,292	59,626	3.8
2000/01	27,860	298,691	9.3	5,598	76,564	7.3	2,591	63,951	4.1
2001/02	27,269	330,278	8.3	5,758	80,882	7.1	2,672	70,183	3.8
2002/03	28,570	359,423	7.9	6,201	87,019	7.1	2,761	72,818	3.8
	1-5			6-8			9-12		
2003/04	29,134	374,997	7.8	8,933	122,966	7.3	2,630	69,401	3.8
2004/05	29,862	377,512	7.9	9,422	139,029	6.8	2,701	76,051	3.6
2005/06	29,728	364,263	6.6	9,458	148,082	4.1	2,401	77,644	3.1
2006/07	29,070	331,855	8.8	9,492	141,081	6.7	1,497	75,800	2.0
2007/08	28,482	314,034	9.1	10,460	144,031	7.3	2,351	83,411	2.8
2008/09	26,979	300,129	9.0	10,155	151,131	6.7	2,425	89,761	2.7
2009/10	22,543	286,021	7.9	6,034	151,702	4.0	2,611	95,076	2.7
2010/11	22,999	311,737	7.4	8,672	154,527	5.6	1,361	99,993	1.4
2011/12	26,775	334,245	8.0	11,322	167,928	6.7	2,820	95,152	3.0
2012/13	33,448	349,652	9.6	11,283	155,526	7.3	3,180	110,369	2.9
2013/14	31,856	361,604	8.8	11,243	152,005	7.4	3,388	115,422	2.9
2014/15	35,771	361,684	9.9	13,224	147,031	8.9	4,059	97,217	4.2

IV. Pre-primary level

1. Pre-primary schools

In the academic year 2014/15, there were 483 pre-primary schools in the whole country. 272(56.3%) are located in Zoba Maekel and Debub. i.e. 144(29.8%) are located in Zoba Maekel. 128 (26.5%) of them are located in Zoba Debub, Out of which 97 (75.8%) are located in rural area of the region.

In the academic year 2014/15, 293 (60.6%) and 190 (39.3%) schools are government and non government owned respectively.

Table 4. Pre-primary level: Location and ownership by zoba, 2014/15

Zoba	Ownership												
	Total			Government		Mission		Awkaf		Private		Community	
	Tot	Urb	Rur	Urb	Rur	Urb	Rur	Urb	Rur	Urb	Rur	Urb	Rur
Anseba	89	19	70	7	57	5	12	1		3		3	1
Debub	128	31	97	9	68	12	12			7	9	3	8
Deb-Keih-B.	18	9	9	8	8	1							1
Gash Barka	62	25	37	19	34	2				3		1	3
Maekel	144	72	72	5	44	14	5			39	17	14	6
Sem-Keih-B.	42	17	25	11	23	5	1			1			1
Total	483	173	310	59	234	39	30	1	0	53	26	21	20

N.B. Urb = Urban Rur = Rural

2. Pre-primary enrolment

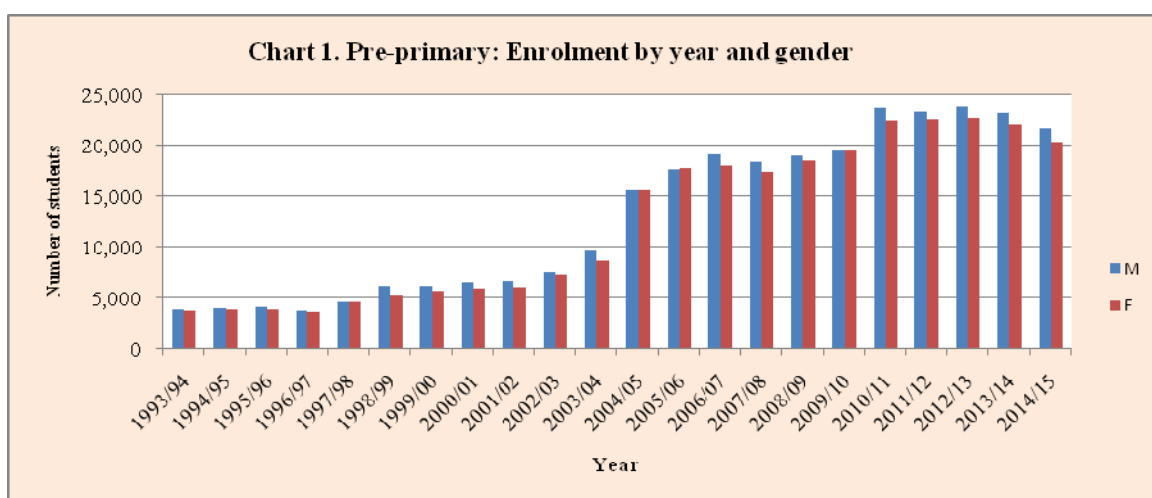
Children of ages 4 and 5 are supposed to be enrolled in pre-primary schools.

Table 5a. Pre-primary level: Gross enrolment ratio by year, 1993/94-2014/15

Year	Population age-group 5-6			Enrolment in pre-primary			Gross enrolment ratio		
	T	M	F	T	M	F	T	M	F
1993/94	117,386	61,094	56,292	7,748	3,909	3,839	6.6	6.4	6.8
1994/95	120,961	62,955	58,006	8,032	4,102	3,930	6.6	6.5	6.8
1995/96	124,645	64,872	59,773	8,180	4,201	3,979	6.6	6.5	6.7
1996/97	128,441	66,848	61,593	7,443	3,791	3,652	5.8	5.7	5.9
1997/98	132,353	68,884	63,469	9,300	4,683	4,617	7.0	6.8	7.3
1998/99	136,383	70,982	65,402	11,581	6,168	5,413	8.5	8.7	8.3
1999/00	140,537	73,143	67,394	11,885	6,181	5,704	8.5	8.5	8.5
2000/01	144,817	75,371	69,446	12,436	6,540	5,896	8.6	8.7	8.5
2001/02	149,227	77,666	71,561	12,747	6,704	6,043	8.5	8.6	8.4
2002/03	153,772	80,031	73,740	14,958	7,563	7,395	9.7	9.5	10.0
2003/04	158,138	82,304	75,834	18,540	9,821	8,719	11.7	11.9	11.5
2004/05	162,629	84,641	77,988	31,244	15,565	15,679	19.2	18.4	20.1
2005/06	164,821	85,809	79,011	35,569	17,672	17,897	21.6	20.6	22.7
2006/07	157,360	82,227	75,142	37,263	19,147	18,116	23.7	23.3	24.1
2007/08	147,466	77,243	70,222	35,833	18,442	17,391	24.3	23.9	24.8
2008/09	137,260	71,975	65,284	37,565	19,026	18,539	27.4	26.4	28.4
2009/10	133,259	69,838	63,526	40,506	19,525	19,544	30.4	28.0	30.8
2010/11	133,756	69,925	63,829	46,104	23,648	22,456	34.5	33.8	35.2
2011/12	145,775	75,847	69,928	45,973	23,378	22,595	31.5	30.8	32.3
	Population age-group 4-5			Enrolment in pre-primary			Gross enrolment ratio		
2012/13	187,718	96,724	90,994	46,488	23,797	22,691	24.8	24.6	24.9
2013/14	213,479	109,486	103,993	45,291	23,195	22,096	21.2	21.2	21.2
2014/15	231,763	118,553	113,216	42,122	21,723	20,399	18.2	18.3	18.0

Table 5b. Pre-primary level: Deviation from the national GER by zoba, 2014/15

Zoba	Population age 4-5			Gross enrolment			GER			Deviation from national ratio		
	T	M	F	T	M	F	T	M	F	T	M	F
Anseba	33,091	17,173	15,928	6,044	3,079	2,965	18.3	17.9	18.6	0.1	-0.4	0.6
Debub	61,428	31,213	30,208	11,038	5,737	5,301	18.0	18.4	17.5	-0.2	0.1	-0.5
Deb-Keih-B	5,535	2,790	2,743	657	335	322	11.9	12.0	11.7	-6.3	-6.3	-6.3
Gash Barka	55,899	29,073	26,846	4,069	2,009	2,060	7.3	6.9	7.7	10.9	-11.4	-10.3
Maekel	47,298	23,543	23,731	17,825	9,229	8,596	37.7	39.2	36.2	19.5	20.9	18.2
Sem-Keih-B	28,513	14,761	13,759	2,489	1,334	1,155	8.7	9.0	8.4	-9.4	-9.3	-9.6
Total	231,763	118,553	113,216	42,122	21,723	20,399	18.2	18.3	18.0	0.0	0.0	0.0

**Table 6a. Pre-primary: Net enrolment ratio by year, 2001/02-2014/15**

Year	Population age-group 5-6			Net enrolment in pre-primary			Net enrolment ratio		
	T	M	F	T	M	F	T	M	F
2001/02	149,227	77,666	71,561	9,160	4,828	4,332	6.1	6.2	6.1
2002/03	153,772	80,031	73,740	10,605	5,266	5,339	6.9	6.6	7.2
2003/04	158,138	82,304	75,834	13,189	6,826	6,363	8.3	8.3	8.4
2004/05	162,629	84,641	77,988	22,167	11,098	11,069	13.6	13.1	14.2
2005/06	164,821	85,809	79,011	25,052	12,294	12,758	15.2	14.3	16.1
2006/07	157,360	82,227	75,142	24,993	12,864	12,129	15.9	15.6	16.1
2007/08	147,466	77,243	70,222	24,597	12,686	11,911	16.7	16.4	17.0
2008/09	137,260	71,975	65,284	28,141	14,274	13,867	20.5	19.8	21.2
2009/10	133,259	69,838	63,526	27,163	14,071	13,092	20.4	20.1	20.6
2010/11	133,756	69,925	63,829	29,990	15,404	14,586	22.4	22.0	22.9
2011/12	145,775	75,847	69,928	28,952	14,801	14,151	19.9	19.5	20.2
	Population age-group 4-5			Net Enrolment in pre-primary			Net enrolment ratio		
2012/13	187,718	96,724	90,994	38,869	19,905	18,964	20.7	20.6	20.8
2013/14	213,479	109,486	103,993	35,952	18,448	17,504	16.8	16.8	16.8
2014/15	231,763	118,451	113,311	38,443	19,828	18,615	16.6	16.7	16.4

Table 6b. Pre-primary level: Deviation from the national NER by zoba, 2014/15

Zoba	Population age 4-5			Net enrolment			NER			Deviation from national ratio		
	T	M	F	T	M	F	T	M	F	T	M	F
Anseba	33,091	17,173	15,928	5,312	2,704	2,608	16.1	15.7	16.4	-0.5	-1.0	-0.1
Debub	61,428	31,213	30,208	10,205	5,285	4,920	16.6	16.9	16.3	0.0	0.2	-0.2
Deb-Keih-B	5,535	2,790	2,743	542	272	270	9.8	9.7	9.8	-6.8	-7.0	-6.6
Gash Barka	55,899	29,073	26,846	3,255	1,600	1,655	5.8	5.5	6.2	-10.8	-11.2	-10.3
Maekel	47,298	23,543	23,731	16,885	8,744	8,141	35.7	37.1	34.3	19.1	20.4	17.9
Sem-Keih-B	28,513	14,761	13,759	2,244	1,223	1,021	7.9	8.3	7.4	-8.7	-8.4	-9.0
Total	231,763	118,553	113,216	38,443	19,828	18,615	16.6	16.7	16.4	0.0	0.0	0.0

3. Pre-primary teachers

During the academic year 2014/15, there were 1,456 pre-primary teachers in the whole country of whom 608 (41.8%) have professional training.

As table 9 indicates almost all (1,418 or 97.4%) teachers in pre-primary schools are female. In the academic year 2014/15 male teachers were only 2.6%.

Table 7. Pre-primary level: Gender and teacher's training status by zoba, 2014/15

Zoba	Total		Trained		Not Trained		Unknown	
	T	F	T	F	T	F	T	F
Anseba	201	192	81	78	120	114	0	0
Debub	267	263	92	91	118	115	57	57
Deb-Keih-B	34	29	10	9	19	15	5	5
Gash-Barka	129	125	74	72	45	43	10	10
Maekel	742	727	311	308	431	419	0	0
Sem-Keih-B	83	82	40	39	43	43	0	0
Total	1456	1418	608	597	776	749	72	72

Table 8. Pre-primary level: Pupil/teacher ratio, 1991/92-2014/15

Year	Enrolment			Teachers			Pupil/teacher ratio
	T	M	F	T	M	F	
1991/92	6,461	3,142	3,319	201	0	201	32
1992/93	7,031	3,426	3,605	227	0	227	31
1993/94	7,748	3,909	3,839	244	1	243	32
1994/95	8,032	4,102	3,930	256	1	255	31
1995/96	8,180	4,201	3,979	235	3	232	35
1996/97	7,443	3,791	3,652	207	3	204	36
1997/98	9,300	4,683	4,617	239	3	236	39
1998/99	11,581	6,168	5,413	321	9	312	36
1999/00	11,885	6,181	5,704	320	6	314	37
2000/01	12,436	6,540	5,896	326	8	318	38
2001/02	12,747	6,704	6,043	353	6	347	37
2002/03	14,958	7,563	7,395	410	19	391	37
2003/04	18,540	9,821	8,719	492	21	471	38
2004/05	31,244	15,565	15,679	845	29	816	37
2005/06	35,569	17,672	17,897	1,030	39	991	35
2006/07	37,263	19,147	18,116	1,067	33	1,034	35
2007/08	35,833	17,391	18,442	1,062	37	1,025	34
2008/09	37,565	19,026	18,539	1,117	32	1,085	34
2009/10	40,506	20,981	19,525	1,143	24	1,119	36
2010/11	46,104	22,456	23,648	1,215	20	1,195	38
2011/12	45,973	23,378	22,595	1,296	23	1,273	35
2012/13	46,488	23,797	22,691	1,374	31	1,343	30
2013/14	45,291	23,195	22,096	1,371	30	1,341	33
2014/15	42,122	21,723	20,399	1,456	38	1,418	29

In pre-primary level directors are included in teaching staff.

Table 9. Pre-primary: Percentage of female teachers, 1991/92-2014/15

Year	Teachers			Percentage of female teachers
	T	M	F	
1991/92	201	0	201	100.0
1992/93	227	0	227	100.0
1993/94	244	1	243	99.6
1994/95	256	1	255	99.6
1995/96	235	3	232	98.7
1996/97	207	3	204	98.6
1997/98	239	3	236	98.7
1998/99	321	9	312	97.2
1999/00	320	6	314	98.1
2000/01	326	8	318	97.5
2001/02	353	6	347	98.3
2002/03	413	19	394	95.4
2003/04	492	21	471	95.7
2004/05	845	29	816	96.6
2005/06	1,030	39	991	96.2
2006/07	1,067	33	1,034	96.9
2007/08	1,062	37	1,025	96.5
2008/09	1,117	32	1,085	97.1
2009/10	1,143	24	1,119	97.9
2010/11	1,215	20	1,195	98.0
2011/12	1,296	23	1,273	98.2
2012/13	1,374	31	1,343	97.7
2013/14	1,371	30	1,341	97.8
2014/15	1,456	38	1,418	97.4

V. Elementary level

1. Background

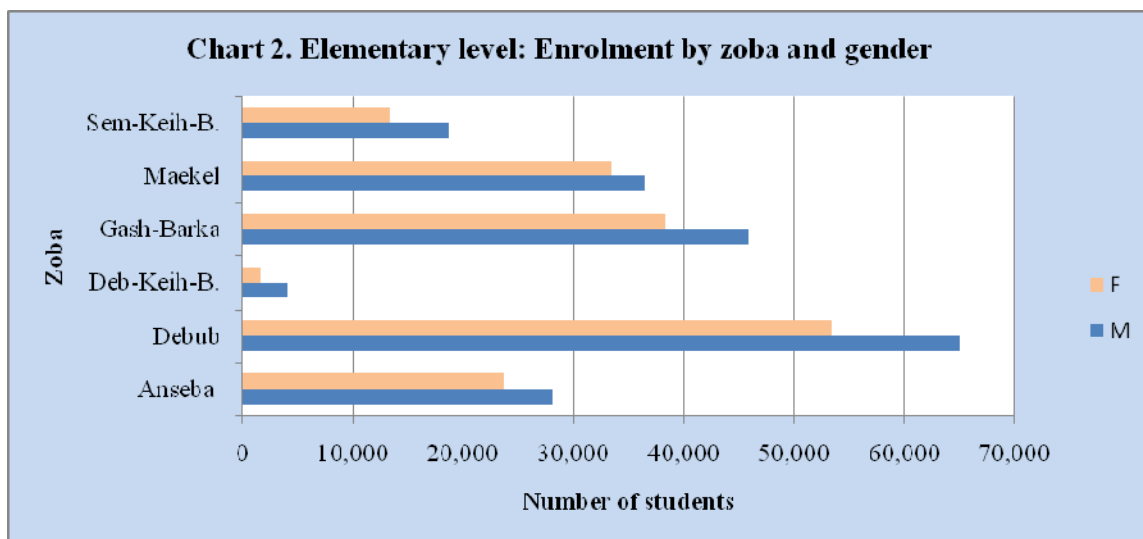
The official school age for elementary level is 6-10 and the duration of stay is 5 years. Education in government schools is free and compulsory. At elementary level medium of instruction is the mother tongue.

2. Enrolment

Enrolment at this level for the academic year 2014/15 was 361,684 out of which 163,786 (45.3%) were females. Out of the total enrolment in elementary school, 35,771 (9.9%) were enrolled in non-government schools.

Table 10. Elementary level: Percentage of change by zoba, gender, 2013/14-2014/15

Zoba	2013/14			2014/15			Percentage of change		
	T	M	F	T	M	F	T	M	F
Anseba	52,340	28,433	23,907	51,686	28,019	23,667	-1.2	-1.5	-1.0
Debub	119,244	65,802	53,442	118,424	64,973	53,451	-0.7	-1.3	0.0
Deb-Keih-B.	5,694	3,934	1,760	5,660	4,019	1,641	-0.6	2.2	-6.8
Gash-Barka	82,265	45,128	37,137	84,112	45,880	38,232	2.2	1.7	2.9
Maekel	69,588	36,416	33,172	69,812	36,366	33,446	0.3	-0.1	0.8
Sem-Keih-B.	32,473	18,907	13,566	31,990	18,641	13,349	-1.5	-1.4	-1.6
Total	361,604	198,620	162,984	361,684	197,898	163,786	0.02	-0.4	0.5



3. Gross admission ratio

Table 11. Elementary level: Gross admission ratio by year, 1993/94-2014/15

Year	Population of age 7			Admission in grade one			Gross admission ratio		
	T	M	F	T	M	F	T	M	F
1993/94	59,148	30,546	28,602	45,656	25,432	20,224	77.2	83.3	70.7
1994/95	59,148	31,477	29,473	44,285	24,159	20,126	74.9	76.8	68.3
1995/96	62,806	32,435	30,371	46,497	26,108	20,389	74.0	80.5	67.1
1996/97	64,719	33,423	31,296	41,122	22,578	18,544	63.5	67.6	59.3
1997/98	66,690	34,441	32,249	50,471	28,407	22,064	75.7	82.5	68.4
1998/99	68,721	35,490	33,231	57,336	31,758	25,578	83.4	89.5	77.0
1999/00	70,814	36,571	34,243	68,902	38,345	30,557	97.3	104.9	89.2
2000/01	72,970	37,684	35,286	72,139	39,595	32,544	98.9	105.1	92.2
2001/02	75,192	38,832	36,360	74,899	41,114	33,785	99.6	105.9	92.9
2002/03	77,482	40,015	37,468	76,145	41,767	34,378	98.3	104.4	91.8
2003/04	79,683	41,151	38,532	68,983	38,059	30,924	86.6	92.5	80.3
2004/05	81,945	42,319	39,626	69,166	37,633	31,533	84.4	88.9	79.6
2005/06	83,052	42,902	40,150	60,922	32,985	27,937	73.4	76.9	69.6
2006/07	82,390	42,791	39,306	52,983	28,546	24,437	64.3	66.7	62.2
2007/08	78,893	41,138	37,755	51,784	28,326	23,458	65.6	68.9	62.1
2008/09	73,565	38,473	35,092	56,220	30,452	25,768	76.4	79.2	73.4
2009/10	69,641	36,492	33,152	59,097	31,213	27,884	84.9	85.5	84.1
2010/11	65,141	34,139	31,000	87,235	47,919	39,316	133.9	140.4	126.8
2011/12	65,054	34,071	30,983	89,836	49,239	40,597	138.1	144.5	131.0
	Population of age 6			Admission in grade one			Gross admission ratio		
2012/13	78,412	40,652	37,761	87,618	47,719	39,899	111.7	117.4	105.7
2013/14	85,120	43,978	41,140	85,533	46,797	38,736	100.5	106.4	94.2
2014/15	74,223	38,207	36,016	75,801	41,303	34,498	102.1	108.1	95.8

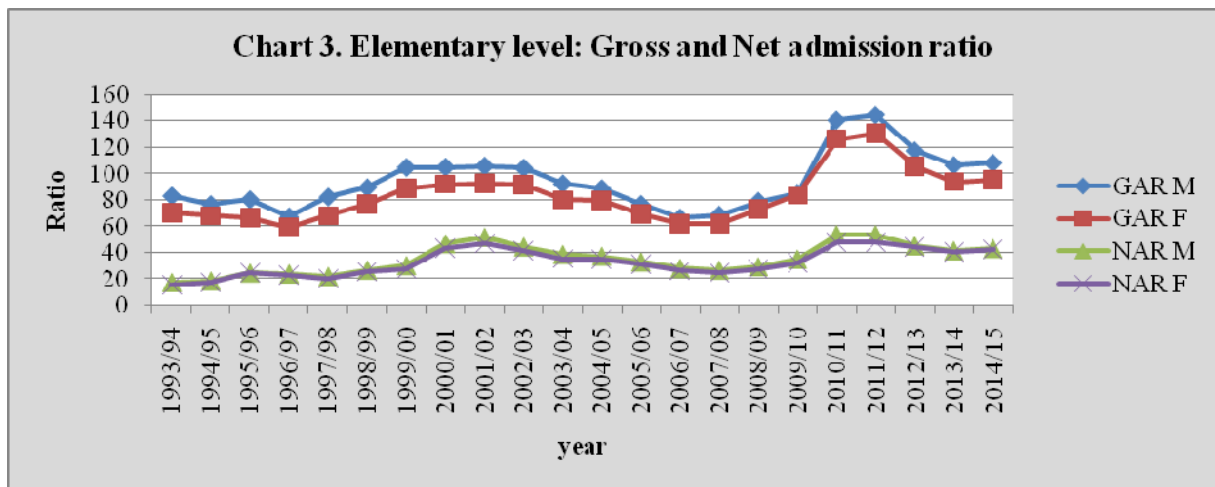
As can be seen in Table 11, the gross admission ratio has been steadily decreasing from 83.8% to 63.5% between the academic year 1991/92 and 1996/97. Then it started to progressively increase from 63.5% to 98.3% between the academic year 1996/97 and 2002/03. Then after that, it has decreased from 86.6% to 65.6% between the academic year 2003/04 and 2007/08. From 2012/13 to 2014/15 academic years, gross admission ratio has shown a decrease from the previous two academic years.

4. Net admission ratio

Table 12. Elementary level: Net admission ratio by year, 1993/94-2014/15

Year	Population of age 7			Admission of age 7			Net admission ratio		
	T	M	F	T	M	F	T	M	F
1993/94	59,148	30,546	28,602	9,947	5,392	4,555	16.8	17.7	15.9
1994/95	59,148	31,477	29,473	11,227	5,949	5,278	19.0	18.9	17.9
1995/96	62,806	32,435	30,371	15,612	8,053	7,559	24.9	24.8	24.9
1996/97	64,719	33,423	31,296	15,469	8,132	7,337	23.9	24.3	23.4
1997/98	66,690	34,441	32,249	14,370	7,723	6,647	21.5	22.4	20.6
1998/99	68,721	35,490	33,231	18,140	9,608	8,532	26.4	27.1	25.7
1999/00	70,814	36,571	34,243	20,674	11,169	9,505	29.2	30.5	27.8
2000/01	72,970	37,684	35,286	32,977	17,632	15,345	45.2	46.8	43.5
2001/02	75,192	38,832	36,360	37,071	20,094	16,977	49.3	51.7	46.7
2002/03	77,482	40,015	37,468	33,199	17,810	15,389	42.8	44.5	41.1
2003/04	79,683	41,151	38,532	29,568	15,906	13,662	37.1	38.7	35.5
2004/05	81,945	42,319	39,626	29,866	15,833	14,033	36.4	37.4	35.4
2005/06	83,052	42,902	40,150	26,923	14,203	12,720	32.4	33.1	31.7
2006/07	82,390	42,791	39,306	22,577	12,145	10,432	27.4	28.4	26.5
2007/08	78,893	41,138	37,755	20,502	11,157	9,345	26.0	27.1	24.8
2008/09	73,565	38,473	35,092	21,071	11,385	9,686	28.6	29.6	27.6
2009/10	69,641	36,492	33,152	23,627	12,836	10,791	33.9	35.2	32.6
2010/11	65,141	34,139	31,000	33,135	18,286	14,849	50.9	53.6	47.9
2011/12	65,054	34,071	30,983	33,060	18,216	14,844	50.8	53.5	47.9
	Population of age 6			Admission of age 6			Net admission ratio		
2012/13	78,412	40,652	37,761	35,125	18,434	16,691	44.8	45.3	44.2
2013/14	85,120	43,978	41,140	34,929	18,300	16,629	41.0	41.6	40.4
2014/15	74,223	38,207	36,016	31,838	16,546	15,292	42.9	43.3	42.5

As can be seen from table 12, the net admission ratio has increased yearly between the successive academic years of 1993/94-2001/02 except in the academic year 1997/98, and it has decreased yearly between the successive academic years of 2002/03-2007/08. It has showed an increase starting from the academic year of 2008/09 on wards and decreasing starting from 2012/13. This decrease is mainly due to the change of school age population from age 7 to age 6.



5. Over-aged pupils in grade one.

Table 13. Elementary level: Percentage of over-age pupils in grade one, 1995/96-2014/15

Year	Enrolment in grade 1			Over-age enrolment in Grade 1			% of over-age in grade 1		
	T	M	F	T	M	F	T	M	F
1995/96	65,110	34,869	30,241	47,320	25,600	21,718	72.7	73.4	71.8
1996/97	58,841	31,820	27,021	40,404	22,032	18,372	68.7	69.2	68.0
1997/98	68,388	38,104	30,284	48,649	27,496	21,153	71.1	72.2	69.8
1998/99	75,340	41,586	33,754	50,409	28,365	22,044	66.9	68.2	65.3
1999/00	91,037	50,459	40,576	59,351	33,493	25,858	65.2	66.4	63.7
2000/01	88,045	47,907	40,138	45,357	25,146	20,211	51.5	52.5	50.4
2001/02	97,678	53,409	44,269	48,885	27,137	21,748	50.0	50.9	49.1
2002/03	101,496	55,186	46,310	53,456	28,270	25,186	52.7	51.2	54.4
2003/04	99,216	54,309	44,907	46,542	26,229	20,313	46.9	48.3	45.2
2004/05	89,524	48,902	40,622	36,585	20,831	15,754	40.9	42.6	38.8
2005/06	73,222	39,781	33,441	27,184	15,534	11,650	37.1	39.1	34.8
2006/07	62,486	33,732	28,754	36,729	19,783	16,946	58.8	58.6	58.9
2007/08	60,940	33,506	27,434	16,086	9,275	6,811	26.4	27.7	24.8
2008/09	64,665	35,217	29,448	15,837	9,157	6,680	24.5	26.0	22.7
2009/10	69,624	37,899	31,725	16,435	9,397	7,038	23.6	24.8	22.2
2010/11	87,235	47,919	39,316	20,310	11,482	8,828	23.3	24.0	22.5
2011/12	89,836	49,239	40,597	21,377	12,537	8,840	23.8	25.5	21.8
2012/13	87,618	47,719	39,899	52,693	29,357	23,336	60.1	61.5	58.5
2013/14	85,533	46,797	38,736	50,704	28,542	22,162	59.3	61.0	57.2
2014/15	75,801	41,303	34,498	43,301	24,422	18,879	57.1	59.1	54.7

Table 13 indicates over aged enrolment in grade one has increased to 60.1 and it is mainly due to the change of the official age from 7-11 to 6-10 in 2012/13.

6. Under-aged pupils in grade one.

Table 14. Elementary level: Percentage of under-age pupils in grade one, 1995/96-2014/15

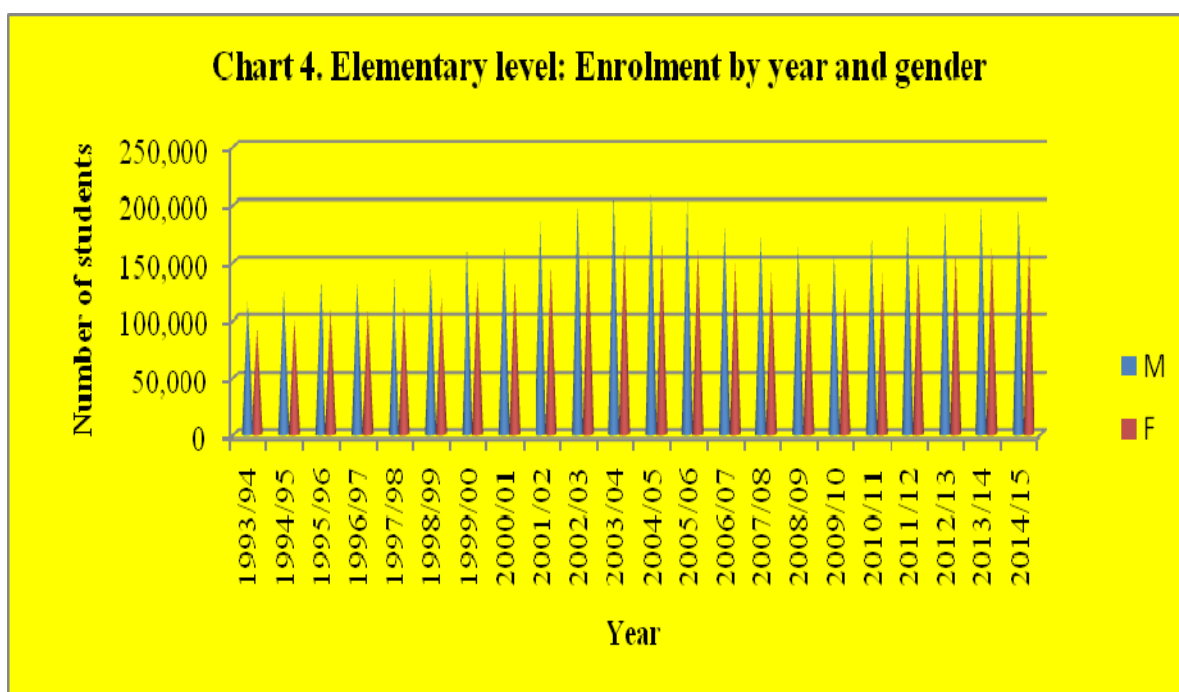
Year	Enrolment in Grade 1			Under-age enrolment grade1			Percentage of under-age		
	T	M	F	T	M	F	T	M	F
1995/96	65,110	34,869	30,241	880	445	435	1.4	1.3	1.4
1996/97	58,841	31,820	27,021	1,135	588	547	1.9	1.8	2.0
1997/98	68,388	38,104	30,284	1,186	637	549	1.7	1.7	1.8
1998/99	75,340	41,586	33,754	3,497	1,814	1,683	4.6	4.4	5.0
1999/00	91,037	50,459	40,576	6,295	3,294	3,001	6.9	6.5	7.4
2000/01	88,045	47,907	40,138	9,693	5,112	4,581	11.0	10.7	11.4
2001/02	97,678	53,409	44,269	11,722	6,178	5,544	12.0	11.6	12.5
2002/03	101,496	55,186	46,310	10,990	5,704	5,286	10.8	10.3	11.4
2003/04	99,216	54,309	44,907	13,682	7,062	6,620	13.8	13.0	14.7
2004/05	89,524	48,902	40,622	15,520	8,090	7,430	17.3	16.5	18.3
2005/06	73,222	39,781	33,441	14,492	7,423	7,069	19.8	18.7	21.1
2006/07	62,486	33,732	28,754	19,371	10,083	9,288	31.0	29.9	32.3
2007/08	60,940	33,506	27,434	20,349	10,821	9,528	33.4	32.3	34.7
2008/09	64,665	35,217	29,448	23,937	12,523	11,414	37.0	35.6	38.8
2009/10	69,624	37,899	31,725	26,164	13,644	12,520	37.6	36.0	39.5
2010/11	87,235	47,919	39,316	33,790	18,151	15,639	38.7	37.9	39.8
2011/12	89,836	49,239	40,597	35,399	18,324	16,913	39.4	37.2	41.7
2012/13	87,618	47,719	39,899	294	164	130	0.3	0.3	0.3
2013/14	85,533	46,797	38,736	693	367	326	0.8	0.8	0.8
2014/15	75,801	41,303	34,498	662	335	327	0.9	0.8	0.9

From the academic year 1991/92 up to the academic year 1997/98 except for the academic year 1996/97 enrolment of under-aged was continuously decreasing. This was mainly because MoE regulations in those years did not allow children under 7 to be enrolled in elementary schools. Starting from the academic year 1997/98 the enrolment of under-aged children has been increasing continuously until 2011/12. Starting from 2012/13 academic year under age students has been drastically decreased. This is mainly due to the change of the official school age from age 7 to age 6.

7. Children out of school

Table 15. Enrolment level: Percentage of children out of school, 1993/94-2014/15

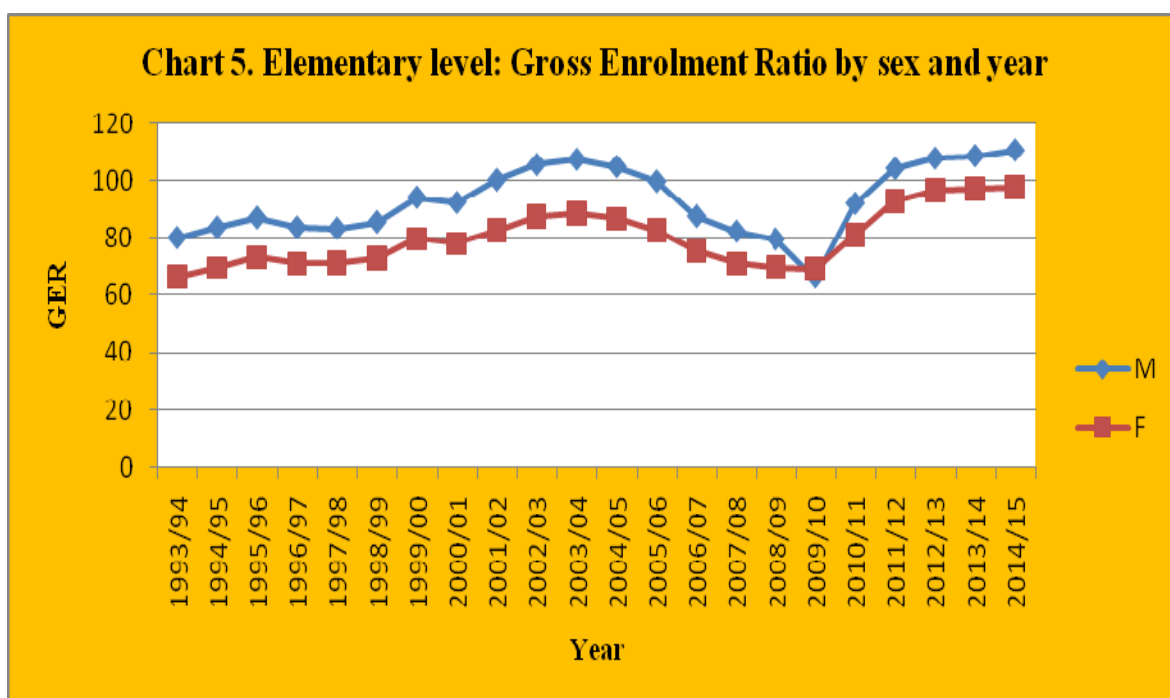
Year	Population of 7-11.			Net enrolment 7-11.			NER	Number of children out of school 7-11			Percentage of children out of School 7-11
	T	M	F	T	M	F		T	M	F	
1993/94	283,642	144,535	139,107	113,612	59,645	53,967	40.1	170,030	84,890	85,140	59.9
1994/95	292,280	148,937	143,343	122,084	64,098	57,986	41.8	170,196	84,839	85,357	58.2
1995/96	301,181	153,473	147,709	133,496	69,958	63,538	44.3	167,685	83,515	84,171	55.7
1996/97	310,354	158,147	152,207	136,943	72,073	64,870	44.1	173,411	86,074	87,337	55.9
1997/98	319,805	162,963	156,843	150,751	80,212	70,539	47.1	169,054	82,751	86,304	52.9
1998/99	329,545	167,926	161,619	166,879	89,556	77,323	50.6	162,666	78,370	84,296	49.4
1999/00	339,581	173,040	166,541	194,963	104,748	90,215	57.4	144,618	68,292	76,326	42.6
2000/01	349,923	178,310	171,613	205,831	111,022	94,809	58.8	144,092	67,288	76,804	41.2
2001/02	360,579	183,740	176,839	232,030	125,941	106,089	64.3	128,549	57,799	70,750	35.7
2002/03	371,561	189,336	182,225	256,360	139,072	117,288	69.0	115,201	50,264	64,937	31.0
2003/04	382,111	194,712	187,399	269,326	146,379	122,947	70.5	112,785	48,333	64,452	29.5
2004/05	392,962	200,241	192,721	276,815	149,916	126,899	70.4	116,147	50,325	65,822	29.6
2005/06	398,350	202,996	195,355	272,401	146,588	125,813	68.4	125,949	56,408	69,542	35.6
2006/07	405,681	208,224	197,483	248,782	133,238	115,544	61.3	156,899	74,986	81,939	38.7
2007/08	408,392	210,839	197,553	233,590	125,816	107,774	57.2	174,802	85,023	89,779	42.8
2008/09	400,601	207,792	192,807	221,358	119,193	102,165	55.3	179,243	88,599	90,642	44.7
2009/10	389,401	202,728	186,692	214,592	115,928	98,664	55.1	174,809	86,800	88,028	44.9
2010/11	358,801	187,200	171,594	237,808	129,136	108,672	66.3	120,993	58,064	62,922	33.7
2011/12	337,784	176,696	161,088	259,345	141,118	118,227	76.8	78,439	35,578	42,861	23.2
	Population of 6-10			Net enrolment 6-10			NER	Out of school age 6-10			percentage
	T	M	F	T	M	F		T	M	F	
2012/13	341,150	178,197	162,957	276,762	148,577	128,185	81.1	64,388	29,620	34,772	18.9
2013/14	350,594	182,870	167,724	286,457	153,594	132,863	81.7	64,137	29,276	34,861	18.3
2014/15	346,116	178,975	167,140	283,815	151,571	132,244	82.0	62,301	27,404	34,896	18.0



8. Gross enrolment ratio

Table 16. Elementary level: Gross enrolment ratio by year, 1993/94-2014/15

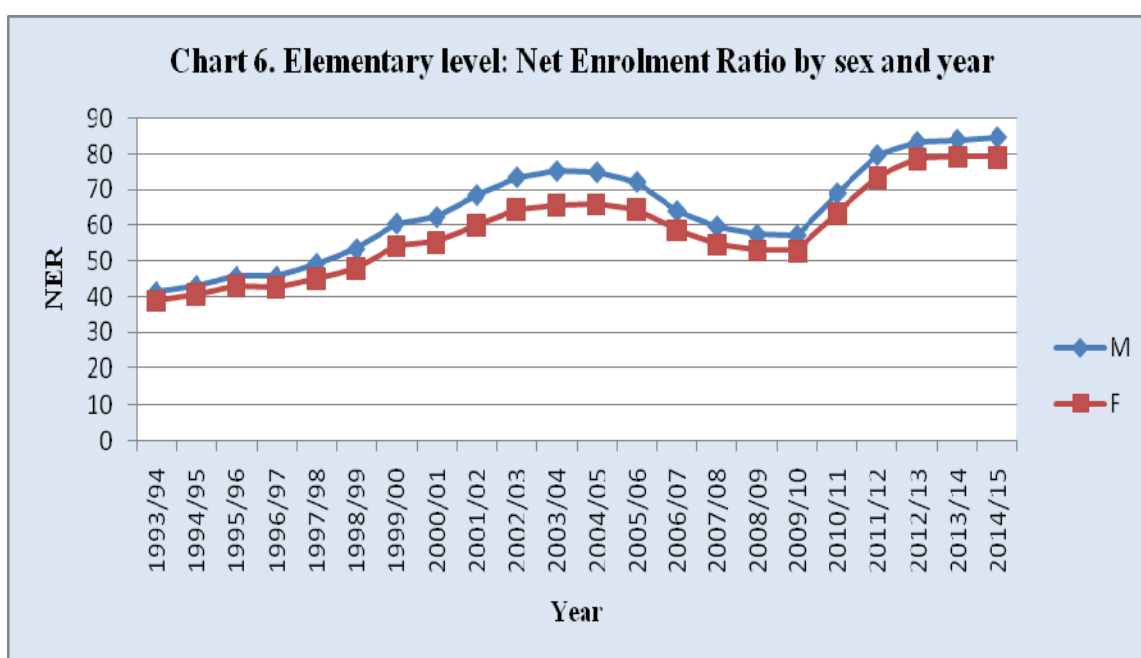
Year	Total Population 7-11			Enrolment in elementary level			Gross enrolment ratio		
	T	M	F	T	M	F	T	M	F
1994/95	292,280	148,937	143,343	224,287	124,544	99,743	76.7	83.6	69.6
1995/96	301,181	153,473	147,709	241,725	133,471	108,254	80.3	87.0	73.3
1996/97	310,354	158,147	152,207	240,737	132,250	108,487	77.6	83.6	71.3
1997/98	319,805	162,963	156,843	247,499	135,569	111,930	77.4	83.2	71.4
1998/99	329,545	167,926	161,619	261,963	143,578	118,385	79.5	85.5	73.2
1999/00	339,581	173,040	166,541	295,941	162,896	133,045	87.1	94.1	79.9
2000/01	349,923	178,310	171,613	298,691	164,523	134,168	85.4	92.3	78.2
2001/02	360,579	183,740	176,839	330,278	184,060	146,218	91.6	100.2	82.7
2002/03	371,561	189,336	182,225	359,423	199,860	159,563	96.7	105.6	87.6
2003/04	382,111	194,712	187,399	374,997	209,043	165,954	98.1	107.4	88.6
2004/05	392,962	200,241	192,721	377,512	210,061	167,451	96.1	104.9	86.9
2005/06	398,350	202,996	195,355	364,263	202,388	161,875	92.1	99.7	82.9
2006/07	405,681	208,224	197,483	331,855	182,100	149,755	81.8	87.5	75.8
2007/08	408,392	210,839	197,553	314,034	173,242	140,792	76.9	82.2	71.3
2008/09	400,601	207,792	192,807	300,129	165,111	135,018	74.9	79.5	70.0
2009/10	389,401	202,728	186,692	286,021	156,803	129,218	73.5	66.2	69.2
2010/11	358,801	187,200	171,594	311,737	172,153	139,584	86.9	92.0	81.3
2011/12	337,784	176,696	161,088	334,245	184,404	149,841	99.0	104.2	93.0
	Total Population 6-10			Enrolment in elementary level			Gross enrolment ratio		
2012/13	341,150	178,197	162,957	349,652	192,118	157,534	102.5	107.8	96.7
2013/14	350,594	182,870	167,724	361,604	198,620	162,984	103.1	108.6	97.2
2014/15	346,116	178,975	167,140	361,684	197,898	163,786	104.5	110.6	98.0



9. Net enrolment ratio

Table 17. Elementary level: Net enrolment ratio by year: 1993/94-2014/15

Year	Population age 7-11.			Net enrolment			Net enrolment ratio %		
	T	M	F	T	M	F	T	M	F
1994/95	292,280	148,937	143,343	122,084	64,098	57,986	41.8	43.0	40.5
1995/96	301,181	153,473	147,709	133,496	69,958	63,538	44.3	45.6	43.0
1996/97	310,354	158,147	152,207	136,943	72,073	64,870	44.1	45.6	42.6
1997/98	319,805	162,963	156,843	150,751	80,212	70,539	47.1	49.2	45.0
1998/99	329,545	167,926	161,619	166,879	89,556	77,323	50.6	53.3	47.8
1999/00	339,581	173,040	166,541	194,963	104,743	90,215	57.4	60.5	54.2
2000/01	349,923	178,310	171,613	205,831	111,022	94,809	58.8	62.3	55.2
2001/02	360,579	183,740	176,839	232,030	125,941	106,089	64.3	68.5	60.0
2002/03	371,561	189,336	182,225	256,360	139,072	117,288	69.0	73.5	64.4
2003/04	382,111	194,712	187,399	269,326	146,379	122,947	70.5	75.2	65.6
2004/05	392,962	200,241	192,721	276,815	149,916	126,899	70.4	74.9	65.8
2005/06	398,350	202,996	195,355	272,401	146,588	125,813	68.4	72.2	64.4
2006/07	405,681	208,224	197,483	248,782	133,238	115,544	61.3	64.0	58.5
2007/08	408,392	210,839	197,553	233,590	125,816	107,774	57.2	59.7	54.6
2008/09	400,601	207,792	192,807	221,358	119,193	102,165	55.3	57.4	53.0
2009/10	389,401	202,728	186,692	214,592	115,928	98,664	55.1	57.2	52.8
2010/11	358,801	187,200	171,594	237,808	129,136	108,672	66.3	69.0	63.3
2011/12	337,784	176,696	161,088	259,345	141,118	118,227	76.8	79.7	73.4
	Population age 6-10			Net enrolment			Net enrolment ratio %		
2012/13	341,150	178,197	162,957	276,762	148,577	128,185	81.1	83.4	78.7
2013/14	350,594	182,870	167,724	286,457	153,594	132,863	81.7	84.0	79.2
2014/15	346,116	178,975	167,140	283,815	151,571	132,244	82.0	84.7	79.1



10. Percentage of repeaters

Table 18. Elementary level: Percentage of repeaters by gender and year, 1991/92-2014/15

Year	Enrolment			Repeaters			Percentage of repeaters		
	T	M	F	T	M	F	T	M	F
1991/92	150,982	81,746	69,236	N. A.	N.A.	N. A.	N.A.	N. A.	N.A.
1992/93	184,656	102,235	82,421	47,139	23,289	23,850	25.5	22.8	28.9
1993/94	208,199	115,663	92,536	41,694	20,632	21,062	20.0	17.8	22.8
1994/95	224,287	124,544	99,743	42,426	21,177	21,249	18.9	17.0	21.3
1995/96	241,725	133,471	108,254	49,172	24,470	24,702	20.3	18.3	22.8
1996/97	240,737	132,250	108,487	49,246	25,006	24,240	20.5	18.9	22.3
1997/98	247,499	135,569	111,930	56,157	28,613	27,544	22.7	21.1	24.6
1998/99	261,963	143,578	118,385	50,820	26,168	24,652	19.4	18.2	20.8
1999/00	295,941	162,896	133,045	57,366	30,798	26,568	19.4	18.9	20.0
2000/01	298,691	164,523	134,168	41,387	22,499	18,888	13.9	13.7	14.1
2001/02	330,278	184,060	146,218	47,249	21,005	26,244	14.3	11.4	17.9
2002/03	359,399	199,842	159,557	73,114	39,485	33,629	20.3	19.8	21.1
2003/04	374,997	209,043	165,954	80,020	43,208	36,812	21.3	20.7	22.2
2004/05	377,512	210,061	167,451	48,629	27,373	21,256	12.9	13.0	12.7
2005/06	364,263	202,388	161,875	49,923	28,068	21,858	13.7	13.9	13.5
2006/07	331,855	182,100	149,755	48,443	27,213	21,230	14.6	14.9	14.2
2007/08	314,034	173,242	140,792	48,393	27,773	20,620	15.4	16.0	14.6
2008/09	300,129	165,111	135,018	41,029	23,757	17,272	13.7	14.4	12.8
2009/10	286,021	156,803	129,218	37,829	22,623	15,206	13.2	14.4	11.8
2010/11	311,737	172,153	139,584	35,280	20,927	14,353	11.3	12.2	10.3
2011/12	334,245	184,404	149,841	41,972	24,714	17,258	12.6	13.4	11.5
2012/13	349,652	192,118	157,534	39,117	23,052	16,065	11.2	12.0	10.2
2013/14	361,604	198,620	162,984	34,603	20,664	13,939	9.6	10.4	8.6
2014/15	361,684	197,898	163,786	21,840	12,907	8,933	6.0	6.5	5.5

N.B Repeaters refer to those who were attending the same grade during 2014/15.

11. Disparities among zobas

Table 19. Elementary level: Deviation from the national GER by zoba, 2014/15

Zoba	Population age 6-10			Gross enrolment			GER			Deviation from national ratio		
	T	M	F	T	M	F	T	M	F	T	M	F
Anseba	49,418	25,925	23,515	51,686	28,019	23,667	104.6	108.1	100.6	0.1	-2.5	2.7
Debub	91,736	47,121	44,597	118,424	64,973	53,451	129.1	137.9	119.9	24.6	27.3	21.9
Deb-Keih-B	8,266	4,212	4,050	5,660	4,019	1,641	68.5	95.4	40.5	-36.0	-15.2	-57.5
Gash Barka	83,480	43,891	39,632	84,112	45,880	38,232	100.8	104.5	96.5	-3.7	-6.0	-1.5
Maekel	70,635	35,542	35,034	69,812	36,366	33,446	98.8	102.3	95.5	-5.7	-8.3	-2.5
Sem-Keih-B	42,581	22,284	20,313	31,990	18,641	13,349	75.1	83.7	65.7	-29.4	-26.9	-32.3
Total	346,116	178,975	167,140	361,684	197,898	163,786	104.5	110.6	98.0	0.0	0.0	0.0

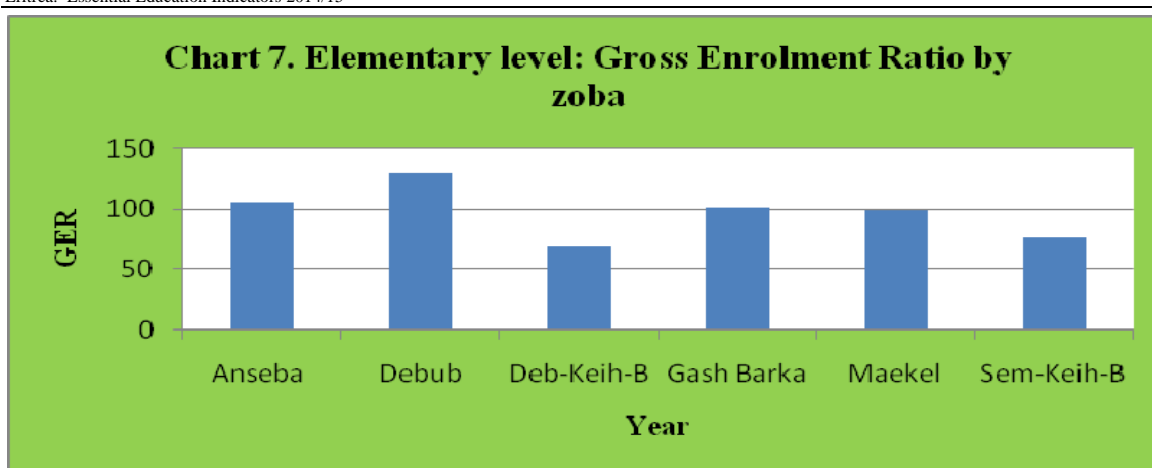


Table 20. Elementary level: Deviation from the national NER by zoba, 2014/15

Zoba	Population of age 6-10			Net enrolment			NER			Deviation from national NER		
	T	M	F	T	M	F	T	M	F	T	M	F
Anseba	49,418	25,925	23,515	38,257	20,247	18,010	77.4	78.1	76.6	-4.6	-6.6	-2.5
Debub	91,736	47,121	44,597	91,609	46,955	43,354	98.3	98.5	98.2	16.3	13.8	19.1
Deb-Keih-B	8,266	4,212	4,050	4,213	2,880	1,333	51.0	68.4	32.9	-31.0	-16.3	-46.2
Gash-Barka	83,480	43,891	39,632	63,825	34,224	29,601	76.5	78.0	74.7	-5.5	-6.7	-4.4
Maekel	70,635	35,542	35,034	59,653	30,501	29,152	84.5	85.8	83.2	2.5	1.1	4.1
Sem-Keih-B	42,581	22,284	20,313	25,258	14,464	10,794	59.3	64.9	53.1	-22.7	-19.8	-26.0
Total	346,116	178,975	167,140	283,815	151,571	132,244	82.0	84.7	79.1	0.0	0.0	0.0

VI. Middle level

1. Background

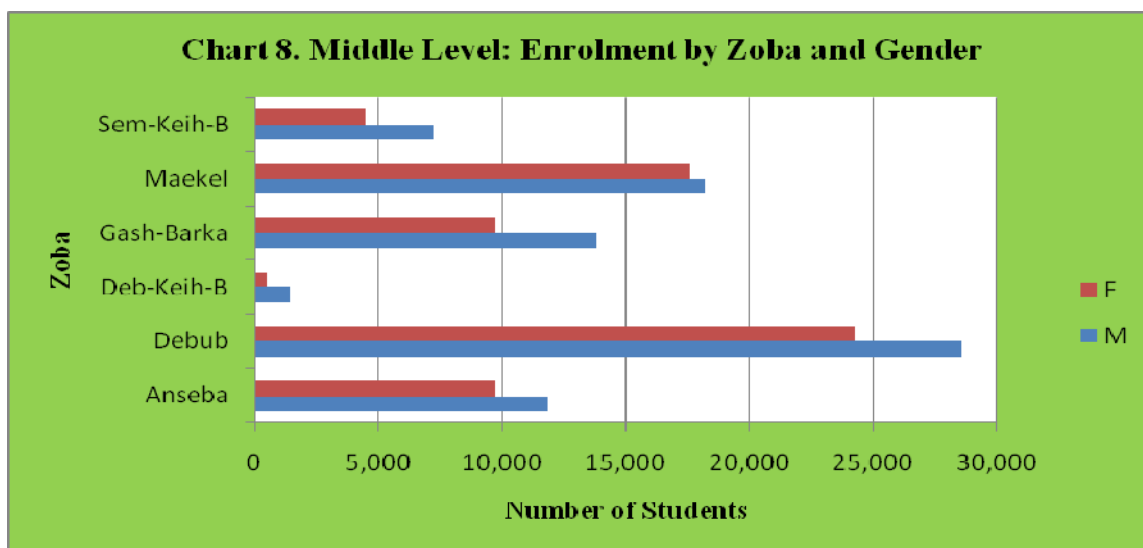
The duration of Middle level is three years (Grades 6, 7 and 8). It is the second level of the compulsory basic education. English is the language of instruction in this level. The official School age is 11-13.

2. Enrolment

Enrolment in this level for the academic year 2014/15 was 147,031. Female enrolment constitutes 66,149 (44.9%) of the total number. Non-government enrolment in this level is 13,224 (8.9%).

Table 21. Middle level: Percentage of change by zoba and gender, 2014/15

Zoba	2013/14			2014/15			Percentage of change		
	T	M	F	T	M	F	T	M	F
Anseba	22,185	12,241	9,944	21,544	11,841	9,703	-2.9	-3.3	-2.4
Debub	55,598	30,670	24,928	52,797	28,550	24,247	-5.0	-6.9	-2.7
Deb-Keih-B	1,763	1,299	464	1,798	1,345	453	2.0	3.5	-2.4
Gash-Barka	24,881	14,737	10,144	23,533	13,818	9,715	-5.4	-6.2	-4.2
Maekel	35,645	18,296	17,349	35,727	18,149	17,578	0.2	-0.8	1.3
Sem-Keih-B	11,933	7,221	4,712	11,632	7,179	4,453	-2.5	-0.6	-5.5
Totals	152,005	84,464	67,541	147,031	80,882	66,149	-3.3	-4.2	-2.1



3. Gross enrolment ratio

Table 22. Middle level: Gross enrolment ratio by year, 1991/92-2014/15

Year	Population 12-13			Gross Enrolment			Gross enrolment ratio		
	T	M	F	T	M	F	T	M	F
1991/92	93,113	46,436	46,678	27,917	14,414	13,503	30.0	31.0	28.9
1992/93	95,949	47,850	48,099	28,431	15,052	13,379	29.6	31.5	27.8
1993/94	98,871	49,307	49,564	32,781	18,129	14,652	33.2	36.8	29.6
1994/95	101,882	50,809	51,073	34,995	19,310	15,685	34.3	38.0	30.7
1995/96	104,985	52,356	52,629	39,751	21,648	18,103	37.9	41.3	34.4
1996/97	108,182	53,951	54,232	47,460	26,739	20,721	43.9	49.6	38.2
1997/98	111,477	55,594	55,883	57,152	32,998	24,154	51.3	59.4	43.2
1998/99	114,872	57,287	57,585	67,021	37,731	29,290	58.3	65.9	50.9
1999/00	118,370	59,031	59,339	74,317	41,033	33,284	62.8	69.5	56.1
2000/01	121,975	60,829	61,146	76,564	41,457	35,107	62.8	68.2	57.4
2001/02	125,690	62,682	63,008	80,882	46,215	34,667	64.4	73.7	55.0
2002/03	129,518	64,591	64,927	87,019	50,138	36,881	67.2	77.6	56.8
	Population 12-14			Gross Enrolment			Gross enrolment ratio		
2003/04	194,394	97,287	97,107	122,966	73,742	49,224	63.3	75.8	50.7
2004/05	199,914	100,050	99,865	139,029	85,033	53,996	69.5	85.0	54.1
2005/06	202,754	101,445	101,308	148,082	90,634	57,448	73.0	89.3	56.7
2006/07	212,625	106,152	106,487	141,081	81,739	59,342	66.4	77.0	55.7
2007/08	223,048	111,874	111,874	144,031	83,766	60,265	64.6	74.9	53.9
2008/09	232,144	117,401	114,743	151,131	87,017	64,114	65.1	74.1	55.9
2009/10	245,960	125,476	120,495	151,702	84,772	66,930	61.7	67.6	55.5
2010/11	250,784	128,812	121,969	154,527	85,939	68,588	61.6	66.7	56.2
2011/12	249,421	128,879	120,542	167,928	93,116	74,812	67.3	72.3	62.1
	Population 11-13			Gross Enrolment			Gross enrolment ratio		
2012/13	223,618	116,448	107,175	155,526	86,586	68,940	69.5	74.4	64.3
2013/14	206,247	107,911	98,336	152,005	84,464	67,541	73.7	78.3	68.7
2014/15	192,044	100,739	91,306	147,031	80,882	66,149	76.6	80.3	72.4

N.B In the academic year 2003/04 enrolment in middle school is seen to increase tremendously; this is due to the restructuring of grades from 6-7 to 6-8.

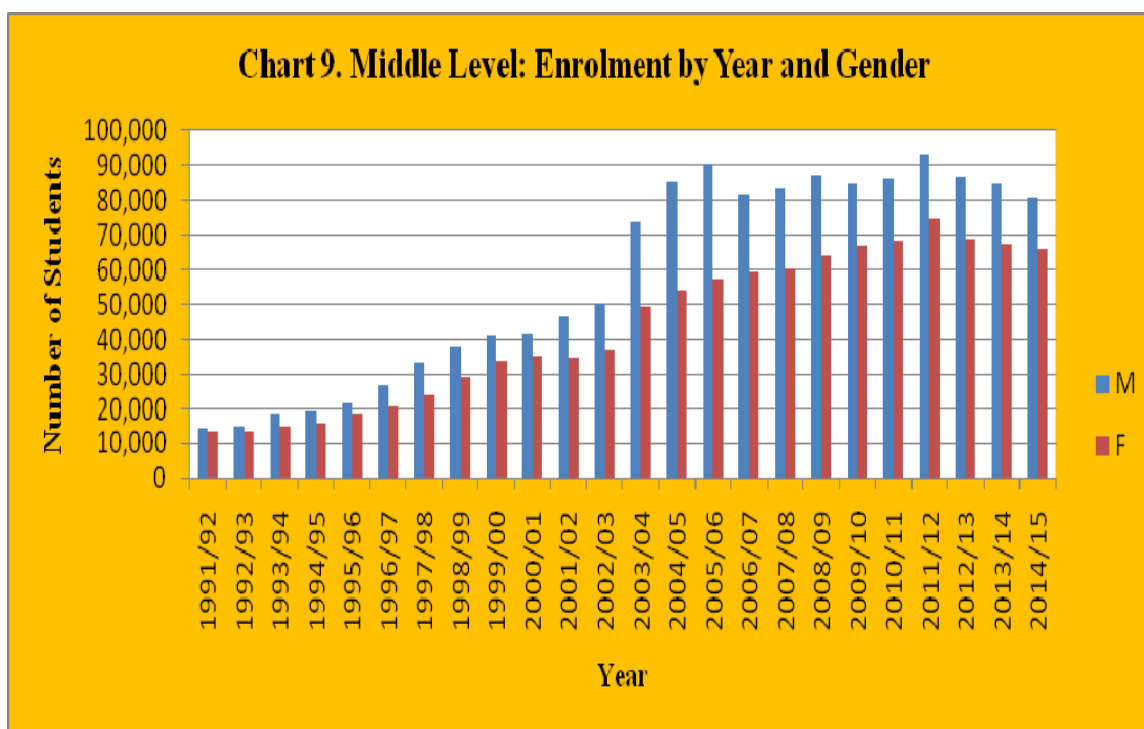


Table 23. Middle level: Deviation from the national GER by zoba, 2014/15

Zoba	Population age 11-13			Gross enrolment			GER			Deviation from national ratio		
	T	M	F	T	M	F	T	M	F	T	M	F
Anseba	27,420	14,585	12,835	21,544	11,841	9,703	78.6	81.2	75.6	2.0	0.9	3.2
Debub	50,900	26,545	24,355	52,797	28,550	24,247	103.7	107.6	99.6	27.2	27.3	27.1
Deb-Keih-B	4,586	2,372	2,214	1,798	1,345	453	39.2	56.7	20.5	-37.4	-23.6	-52.0
Gash Barka	46319	24687	21632	23,533	13,818	9,715	50.8	56.0	44.9	-25.8	-24.3	-27.5
Maekel	39192	20022	19169	35,727	18,149	17,578	91.2	90.6	91.7	14.6	10.4	19.3
Sem-Keih-B	23626	12554	11102	11,632	7,179	4,453	49.2	57.2	40.1	-27.3	-23.1	-32.3
Total	192,044	100,739	91,306	147,031	80,882	66,149	76.6	80.3	72.4	0.0	0.0	0.0

4. Net enrolment ratio

Table 24. Middle level: Net enrolment ratio by year, 1991/92-2014/15

Year	Population 12-13			Net enrolment			Net enrolment ratio		
	T	M	F	T	M	F	T	M	F
1991/92	93,113	46,436	46,678	9,727	5,111	4,616	10.4	11.0	9.9
1992/93	95,949	47,850	48,099	7,941	4,275	3,666	8.3	8.9	7.6
1993/94	98,871	49,307	49,564	8,594	4,604	3,990	8.7	9.3	8.1
1994/95	101,882	50,809	51,073	9,074	4,763	4,311	8.9	9.4	8.4
1995/96	104,985	52,356	52,629	9,988	5,299	4,689	9.5	10.1	8.9
1996/97	108,182	53,951	54,232	12,604	6,925	5,679	11.7	12.8	10.5
1997/98	111,477	55,594	55,883	14,751	8,062	6,689	13.2	14.5	12.0
1998/99	114,872	57,287	57,585	15,878	8,400	7,478	13.8	14.7	13.0
1999/00	118,370	59,031	59,339	18,201	9,552	8,649	15.4	16.2	14.6
2000/01	121,975	60,829	61,146	20,409	10,639	9,770	16.7	17.5	16.0
2001/02	125,690	62,682	63,008	22,348	11,718	10,630	17.8	18.7	16.9
2002/03	129,518	64,591	64,927	24,584	13,057	11,527	19.0	20.2	17.8
	Population 12-14			Net Enrolment			Net enrolment ratio		
2003/04	194,394	97,287	97,107	51,795	28,632	23,163	26.6	29.4	23.9
2004/05	199,914	100,050	99,865	60,323	33,879	26,444	30.2	33.9	26.5
2005/06	202,754	101,445	101,308	66,708	37,334	29,374	32.9	36.8	29.0
2006/07	212,625	106,152	106,487	72,729	40,276	32,453	34.2	37.9	30.5
2007/08	223,048	111,874	111,874	80,570	44,496	36,074	36.1	39.8	32.2
2008/09	232,144	117,401	114,743	86,569	47,349	39,220	37.3	40.3	34.2
2009/10	245,960	125,476	120,495	91,194	49,025	42,170	37.1	39.1	35.0
2010/11	250,784	128,812	121,969	94,245	50,614	43,631	37.6	39.3	35.8
2011/12	249,421	128,879	120,542	95,438	51,123	44,315	38.3	39.7	36.8
	Population 11-13			Net Enrolment			Net enrolment ratio		
2012/13	223,618	116,448	107,175	65,621	34,443	31,178	29.3	29.6	29.1
2013/14	206,247	107,911	98,336	68,495	35,704	32,791	33.2	33.1	33.3
2014/15	192,044	100,739	91,306	72,560	37,513	35,047	37.8	37.2	38.4

Table 25. Middle level: Deviation from national NER by zoba, 2014/15

Zoba	Population age 12-14			Net enrolment			NER			Deviation from national ratio		
	T	M	F	T	M	F	T	M	F	T	M	F
Anseba	27,420	14,585	12,835	8,709	4,527	4,182	31.8	31.0	32.6	-6.0	-6.2	-5.8
Debub	50,900	26,545	24,355	26,657	13,582	13,075	52.4	51.2	53.7	14.6	13.9	15.3
Deb-Keih-B	4,586	2,372	2,214	890	619	271	19.4	26.1	12.2	-18.4	-11.1	-26.1
Gash Barka	46319	24687	21632	9,476	5,173	4,303	20.5	21.0	19.9	-17.3	-16.3	-18.5
Maekel	39192	20022	19169	21,142	10,283	10,859	53.9	51.4	56.6	16.2	14.1	18.3
Sem-Keih-B	23626	12554	11102	5,686	3,329	2,357	24.1	26.5	21.2	-13.7	-10.7	-17.2
Total	192,044	100,739	91,306	72,560	37,513	35,047	37.8	37.2	38.4	0.0	0.0	0.0

5. Percentage of repeaters

Table 26. Middle level: Percentage of repeaters by year, 1992/93-2014/15

Year	Enrolment			Repeaters			Percentage of Repeaters		
	T	M	F	T	M	F	T	M	F
1994/95	34,995	19,310	15,685	4,736	1,781	2,955	13.5	9.2	18.8
1995/96	39,751	21,648	18,103	5,329	1,918	3,411	13.4	8.9	18.8
1996/97	47,460	26,739	20,721	6,193	2,385	3,808	13.1	8.9	18.4
1997/98	57,152	32,998	24,154	8,707	3,401	5,306	15.2	10.3	22.0
1998/99	67,021	37,731	29,290	12,119	5,042	7,077	18.1	13.4	24.2
1999/00	74,317	41,033	33,284	15,632	7,053	8,579	21.0	17.2	25.8
2000/01	76,564	41,457	35,107	16,870	8,025	8,845	22.0	19.4	25.2
2001/02	80,882	46,215	34,667	17,419	9,029	8,390	21.5	19.5	24.2
2002/03	87,019	50,138	36,881	23,126	12,163	10,963	26.6	24.3	29.7
2003/04	122,966	73,742	49,224	21,352	12,648	8,704	17.4	17.2	17.7
2004/05	139,029	85,033	53,996	15,735	10,451	5,286	11.3	12.3	9.8
2005/06	148,082	90,634	57,448	25,283	16,719	8,564	17.1	18.5	14.9
2006/07	141,081	81,342	59,342	21,919	12,723	9,196	15.4	15.6	15.5
2007/08	144,031	83,766	60,265	20,151	11,852	8,299	14.0	14.1	13.8
2008/09	151,131	87,017	64,114	21,925	12,762	9,163	14.5	14.7	14.3
2009/10	151,702	84,772	66,930	18,922	10,872	8,050	12.5	12.8	12.0
2010/11	154,527	85,939	68,588	16,823	10,804	6,019	10.9	12.6	8.8
2011/12	167,928	93,116	74,812	22,847	14,776	8,071	13.6	15.9	10.8
2012/13	155,526	86,586	68,940	26,274	15,076	11,198	16.9	17.4	16.2
2013/14	152,005	84,464	67,541	24,884	14,756	10,128	16.4	17.5	15.0
2014/15	147,031	80,882	66,149	25,487	15,310	10,177	17.3	18.9	15.4

The above table indicates total number of repeaters attending the same grade in the current academic year.

The percentage of repeaters has been declining between 1992/93 and 1996/97 and has started to increase from 1997/98 up to 2002/03 with the exception of 2001/02. From 2003/04 up to 2013/14, a decrease is shown.

VII. Secondary level

1. Background

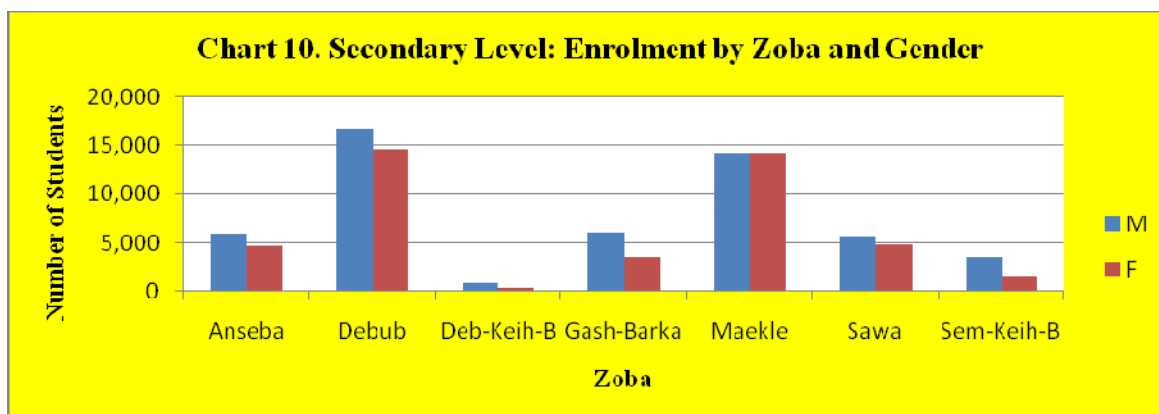
The duration of Secondary level is four years (Grades 9-12). The official school age is 14-17.

2. Enrolment

Enrolment for the academic year 2014/15 was 97,217. Female enrolment constitutes 44,115 (46.4%). Approximately 4.2% of the students in the Secondary level were attending non-government schools.

Table 27. Secondary level: Percentage of change by gender and zoba, 2013/14(Only grade 12 is taught in Sawa)

Zoba	2013/14			2014/15			Percentage of change		
	T	M	F	T	M	F	T	M	F
Anseba	11,757	6,732	5,025	10,598	5,903	4,695	-9.9	-12.3	-6.6
Dehub	33,186	18,770	14,416	31,473	16,774	14,699	-5.2	-10.6	2.0
Deb-Keih-B	1,124	816	308	1,147	833	314	2.0	2.1	1.9
Gash-Barka	10,624	7,035	3,589	9,721	6,072	3,649	-8.5	-13.7	1.7
Maekle	32,790	16,496	16,294	28,410	14,216	14,194	-13.4	-13.8	-12.9
Sawa*	20,304	11,080	9,224	10,575	5,687	4,888	-47.9	-48.7	-47.0
Sem-Keih-B	5,637	3,935	1,702	5,293	3,617	1,676	-6.1	-8.1	-1.5
Total	115,422	64,864	50,558	97,217	53,102	44,115	-15.8	-18.1	-12.7



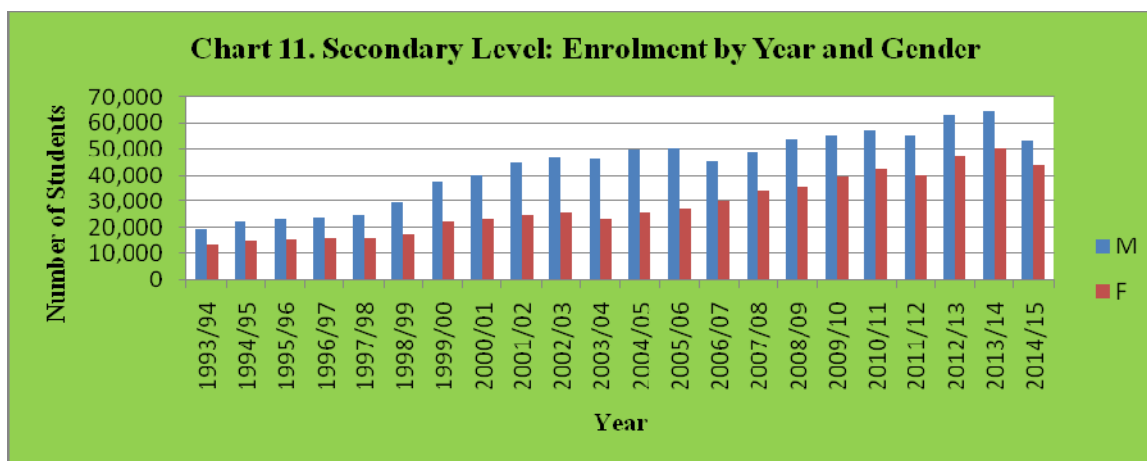
3. Gross enrolment ratio

Table 28. Secondary level: Gross enrolment ratio by year, 1993/94-2014/15

Year	Population of age 14-17			Enrolments			Gross enrolment ratio		
	T	M	F	T	M	F	T	M	F
1994/95	169,456	86,601	82,854	36,728	22,097	14,631	21.7	25.5	17.7
1995/96	174,616	89,239	85,377	39,188	23,713	15,475	22.4	26.6	18.1
1996/97	179,934	91,957	87,978	40,594	24,262	16,332	22.6	26.4	18.6
1997/98	185,414	94,757	90,657	41,615	25,198	16,417	22.4	26.6	18.1
1998/99	191,061	97,643	93,418	47,533	29,777	17,756	24.9	30.5	19.0
1999/00	196,879	100,617	96,263	59,626	37,533	22,093	30.3	37.3	23.0
2000/01	202,875	103,681	99,194	63,951	40,355	23,596	31.5	38.9	23.8
2001/02	209,054	106,838	102,215	70,183	45,129	25,054	33.6	42.2	24.5
2002/03	215,420	110,092	105,328	72,818	46,633	26,185	33.8	42.4	24.9
	Population of age 15-18			Enrolment			Gross enrolment ratio		
2003/04	205,832	105,645	100,187	69,401	46,449	22,952	33.7	44.0	22.9
2004/05	211,677	108,645	103,032	76,051	50,010	26,041	35.9	46.0	25.3
2005/06	214,695	110,235	104,459	77,644	50,351	27,293	36.2	45.7	26.1
2006/07	229,791	117,429	112,376	75,800	45,471	30,329	33.0	38.7	27.0
2007/08	245,784	124,449	121,338	83,411	49,323	34,088	33.9	39.6	28.1
2008/09	260,652	130,861	129,793	89,761	53,997	35,764	34.4	41.3	27.6
2009/10	280,048	140,074	139,988	95,076	55,770	39,306	33.9	39.8	28.1
2010/11	289,699	145,039	144,660	99,993	57,309	42,684	34.5	39.5	29.5
2011/12	300,482	151,330	149,152	95,152	54,936	40,216	31.7	36.3	27.0
	Population of age 14-17			Enrolment			Gross enrolment ratio		
2012/13	324,120	165,893	158,232	110,369	62,881	47,488	34.1	37.9	30.0
2013/14	328,301	169,260	159,040	115,422	64,864	50,558	35.2	38.3	31.8
2014/15	323,745	167,540	156,204	97,217	53,102	44,115	30.0	31.7	28.2

Table 29. Secondary level: Deviation from national GER by zoba, 2014/15

Zoba	Population age 14-17			Gross enrolment			GER			Deviation from national ratio		
	T	M	F	T	M	F	T	M	F	T	M	F
Anseba	46,224	24,260	21,964	10,598	5,903	4,695	22.9	24.3	21.4	-7.1	-7.4	-6.9
Debub	85,807	44,100	41,707	31,473	16,774	14,699	36.7	38.0	35.2	6.6	6.3	7.0
Deb-Keih-B	7,731	3,946	3,785	1,147	833	314	14.8	21.1	8.3	-15.2	-10.6	-19.9
Gash Barka	78,084	41,101	36,983	9,721	6,072	3,649	12.4	14.8	9.9	-17.6	-16.9	-18.4
Maekel	66,069	33,280	32,789	28,410	14,216	14,194	43.0	42.7	43.3	13.0	11.0	15.0
Sawa				10,575	5,687	4,888						
Sem-Keih-B	39,829	20,853	18,976	5,293	3,617	1,676	13.3	17.3	8.8	-16.7	-14.3	-19.4
Total	323,745	167,540	156,204	97,217	53,102	44,115	30.0	31.7	28.2	0.0	0.0	0.0



N.B Grade 12 is taught in Warsay Ykealo Secondary School (sawa)

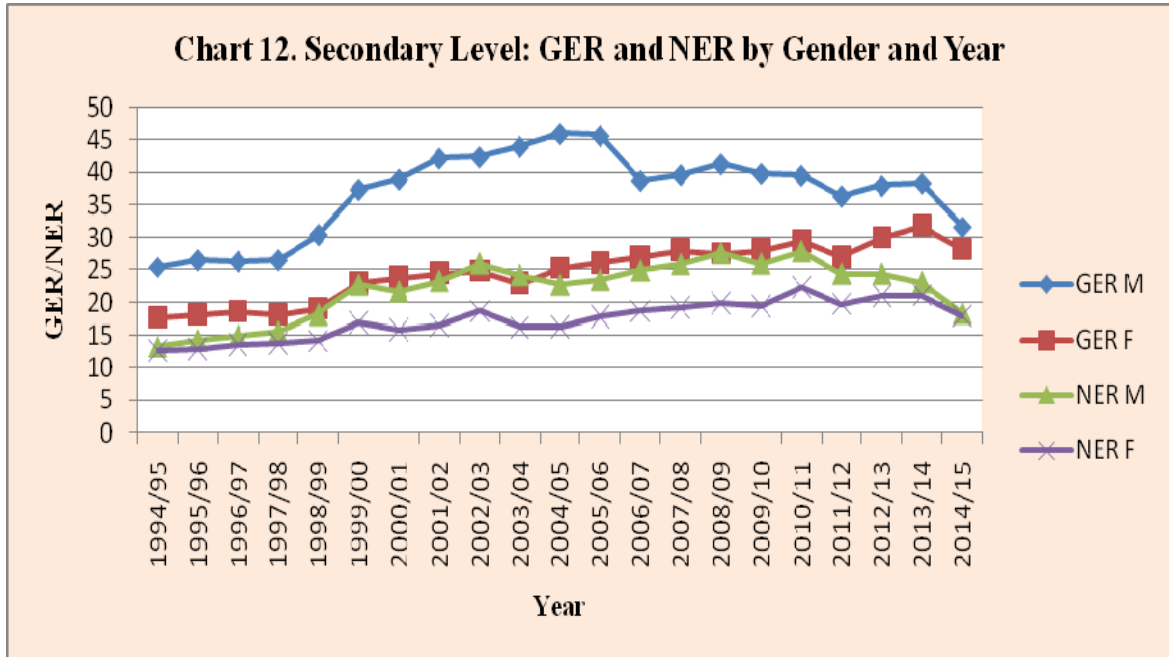
4. Net enrolment ratio

Table 30. Secondary level: Net enrolment ratio by year, 1994/95-2014/15

Year	Population of age 14-17			Net enrolment			Net enrolment ratio		
	T	M	F	T	M	F	T	M	F
1995/96	174,616	89,239	85,377	23,780	12,788	10,992	13.6	14.3	12.9
1996/97	179,934	91,957	87,978	25,911	13,822	12,089	14.4	15.0	13.7
1997/98	185,414	94,757	90,657	27,357	14,817	12,540	14.8	15.6	13.8
1998/99	191,061	97,643	93,418	30,995	17,755	13,240	16.2	18.2	14.2
1999/00	196,879	100,617	96,263	39,197	22,800	16,397	19.9	22.7	17.0
2000/01	202,875	103,681	99,194	38,271	22,482	15,789	18.9	21.7	15.9
2001/02	209,054	106,838	102,215	41,748	24,906	16,842	20.0	23.3	16.5
2002/03	215,420	110,092	105,328	48,269	28,612	19,657	22.4	26.0	18.7
	Population 15-18			Net enrolment			Net enrolment ratio		
2003/04	205,832	105,645	100,187	41,757	25,549	16,208	20.3	24.2	16.2
2004/05	211,677	108,645	103,032	41,523	24,702	16,821	19.6	22.7	16.3
2005/06	214,695	110,235	104,459	44,637	25,942	18,695	20.8	23.5	17.9
2006/07	229,791	117,429	112,376	50,266	29,245	21,021	21.9	24.9	18.7
2007/08	245,784	124,449	121,338	56,261	32,261	23,310	22.9	25.9	19.2
2008/09	260,652	130,861	129,793	61,952	36,078	25,874	23.8	27.6	19.9
2009/10	280,048	140,074	139,988	63,772	36,413	27,359	22.8	26.0	19.5
2010/11	289,699	145,039	144,660	72,965	40,538	32,427	25.2	27.9	22.4
2011/12	300,482	151,330	149,152	66,337	36,877	29,460	22.1	24.4	19.8
	Population 14-17			Net enrolment			Net enrolment ratio		
2012/13	324,120	165,893	158,232	73,729	40,506	33,223	22.7	24.4	21.0
2013/14	328,301	169,260	159,040	72,693	39,080	33,613	22.1	23.1	21.1
2014/15	323,745	167,540	156,204	58,839	30,756	28,083	18.2	18.4	18.0

Table 31. Secondary Level: Deviation from national NER by zoba, 2014/15

Zoba	Population age 14-17			Net enrolment			NER			Deviation from national ratio		
	T	M	F	T	M	F	T	M	F	T	M	F
Anseba	46,224	24,260	21,964	7,250	3,964	3,286	15.7	16.3	15.0	-2.5	-2.0	-3.0
Debub	85,807	44,100	41,707	20,054	10,033	10,021	23.4	22.8	24.0	5.2	4.4	6.0
Deb-Keih-B	7,731	3,946	3,785	1,056	754	302	13.7	19.1	8.0	-4.5	0.8	-10.0
Gash Barka	78,084	41,101	36,983	5,991	3,566	2,425	7.7	8.7	6.6	-10.5	-9.7	-11.4
Maekel	66,069	33,280	32,789	20,150	9,658	10,492	30.5	29.0	32.0	12.3	10.7	14.0
Warsay Ykealo				622	309	313						
Sem-Keih-B	39,829	20,853	18,976	3,716	2,472	1,244	9.3	11.9	6.6	-8.8	-6.5	-11.4
Total	323,745	167,540	156,204	58,839	30,756	28,083	18.2	18.4	18.0	0.0	0.0	0.0



5. Percentage of repeaters

Table 32. Secondary level: Percentage of repeaters by year, 1992/93-2014/15

Year	Enrolment			Repeaters			Percentage		
	T	M	F	T	M	F	T	M	F
1992/93	31,531	17,141	14,390	11,426	4,341	7,085	36.2	25.3	49.2
1993/94	32,756	19,432	13,324	7,504	3,212	4,292	22.9	16.5	32.2
1994/95	36,728	22,097	14,631	6,182	2,704	3,478	16.8	12.2	23.8
1995/96	39,188	23,713	15,475	7,296	3,113	4,183	18.6	13.1	27.0
1996/97	40,594	24,262	16,332	7,135	3,272	3,863	17.6	13.5	23.7
1997/98	41,615	25,198	16,417	7,648	3,305	4,343	18.4	13.1	26.4
1998/99	47,533	29,777	17,756	5,941	2,813	3,128	12.4	9.4	17.6
1999/00	57,334	36,504	20,830	7,640	3,999	3,641	13.3	11.0	17.5
2000/01	63,951	40,355	23,596	11,627	6,747	4,880	18.2	16.7	20.7
2001/02	70,183	45,129	25,054	13,321	7,902	5,419	19.0	17.5	21.6
2002/03	72,818	46,633	26,185	13,922	8,363	5,559	19.1	17.9	21.2
2003/04	69,401	46,449	22,952	11,437	7,418	4,019	16.8	16.0	17.5
2004/05	76,051	50,010	26,041	4,066	3,258	808	5.3	6.5	3.1
2005/06	77,644	50,351	27,293	3,066	2,765	301	4.0	5.5	1.1
2006/07	75,800	45,471	30,329	6,190	4,465	1,725	8.2	9.8	5.7
2007/08	83,411	49,323	34,088	4,998	3,318	1,680	6.0	6.7	4.9
2008/09	89,761	53,997	35,764	6,213	4,426	1,787	6.9	8.2	5.0
2009/10	95,076	55,770	39,306	3,938	1,147	2,791	4.1	2.1	7.1
2010/11	99,993	57,309	42,684	8,804	5,887	2,917	8.8	10.3	6.8
2011/12	95,152	54,936	40,216	8,002	5,532	2,470	8.4	10.1	6.1
2012/13	110,369	62,881	47,488	13,118	9,129	3,989	11.9	14.5	8.4
2013/14	115,422	64,864	50,558	8,408	6,124	2,284	7.3	9.4	4.5
2014/15	97,217	53,102	44,115	14,698	9,275	5,423	15.1	17.5	12.3

N.B The above table indicates total number of repeaters repeating the same grade in current academic year.

VIII. Internal efficiency

1. Length of school year.

The duration of the school year in the academic year 2014/15 was 180 days in the highlands and 191 days in the lowlands. The number of periods per week in grades 1, 2, and 3 were 30 and in grades 4 and 5 were 35.

In the academic year 2014/15, schooling in the lowlands began on September 05 and ended on May 31. In the highlands it began on September 05 and ended on June 30. Schools in the lowlands, teach 6 days a week while schools in the highlands, teach 5 days a week.

The duration of the school year in the academic year 2014/15 is shown in table 33

Table 33. Elementary level: Duration of school year, 2014/15

Grade	Periods per week	Length of a period (minute)	Total number of periods per year	Contact hrs.
1	30	40	1080	720
2	30	40	1080	720
3	30	40	1080	720
4	35	40	1260	840
5	35	40	1260	840

Duration of school year in both locations is the same.

2. All grades: Flow rates

Table 34. All grades: Flow rates by gender and grade, 2014/15

Grade	Dropout			Promotion			Repetition		
	M	F	T	M	F	T	M	F	T
1	11.0	8.4	9.8	83.1	86.7	84.8	5.9	4.9	5.4
2	7.9	5.5	6.8	85.7	88.9	87.2	6.3	5.5	6.0
3	7.2	4.9	6.1	87.8	91.0	89.2	5.0	4.1	4.6
4	8.5	4.9	6.9	73.6	82.7	77.6	17.9	12.4	15.5
5	9.0	5.0	7.2	81.9	89.3	85.3	9.1	5.7	7.6
1-5	8.7	5.8	7.4	82.5	87.7	84.9	8.8	6.5	7.8
6	14.5	7.3	11.4	64.2	78.5	70.4	21.3	14.2	18.2
7	16.2	8.2	12.6	69.1	82.8	75.2	14.7	9.0	12.2
8	18.1	11.5	15.0	60.3	76.5	67.9	21.6	12.0	17.1
6-8	16.2	9.1	13.0	64.3	79.0	70.9	19.5	11.9	16.1
9	29.3	15.9	23.6	46.2	71.3	56.9	24.5	12.8	19.5
10	29.7	21.4	26.0	45.3	63.5	53.6	25.0	15.1	20.5
11	32.8	37.0	34.9	62.2	60.9	61.6	5.0	2.1	3.6
9-11	30.3	24.0	27.5	49.8	65.6	57.0	19.8	10.5	15.6

3. Elementary level: Flow rates

Table 35. Elementary level: Flow rates by age and gender, 2014/15

Age	Dropout			Promotion			Repetition		
	M	F	T	M	F	T	M	F	T
5	35.3	30.8	33.2	42.7	41.5	42.1	22.0	27.7	24.7
6	10.5	7.5	9.1	82.9	87.3	85.0	6.6	5.2	5.9
7	8.4	6.2	7.4	85.4	88.9	87.0	6.2	4.9	5.6
8	7.9	5.7	6.9	85.7	89.3	87.4	6.3	5.0	5.7
9	7.2	4.5	5.9	84.3	89.1	86.6	8.5	6.3	7.5
10	7.6	4.8	6.3	81.8	87.8	84.5	10.6	7.4	9.1
11	8.8	5.2	7.3	79.1	86.0	82.1	12.1	8.8	10.7
12	10.9	7.2	9.4	76.9	83.6	79.6	12.2	9.2	11.0
13	15.3	10.5	13.6	72.8	79.4	75.1	12.0	10.1	11.3
14	22.2	11.1	18.5	55.6	77.8	63.0	22.2	11.1	18.5
15	30.0	0.0	23.1	70.0	66.7	69.2	0.0	33.3	7.7
Total	8.7	5.8	7.4	82.5	87.7	84.9	8.8	6.5	7.8

4. Middle level: Flow rates

Table 36. Middle level: Flow rates by age and gender, 2014/15

Age	Dropout			Promotion			Repetition		
	M	F	T	M	F	T	M	F	T
10	18.0	9.7	13.9	63.8	77.2	70.4	18.3	13.1	15.7
11	8.1	4.0	6.0	76.3	86.6	81.5	15.6	9.4	12.4
12	10.4	5.8	8.2	73.3	84.0	78.4	16.3	10.2	13.4
13	12.5	7.1	10.0	70.4	82.0	75.8	17.1	11.0	14.3
14	16.1	9.1	13.0	65.2	79.1	71.3	18.7	11.8	15.7
15	20.1	12.7	17.0	58.8	74.1	65.2	21.1	13.2	17.8
16	25.0	16.8	21.7	49.2	67.1	56.4	25.8	16.1	21.9
17	28.4	17.9	24.4	44.7	64.3	52.2	26.9	17.8	23.4
18	2.3	0.0	1.1	74.4	88.9	81.8	23.3	11.1	17.0
Total	16.2	9.1	13.0	64.4	79.0	70.9	19.4	12.0	16.1

5. Secondary level: Flow rates

Table 37. Secondary level: Flow rates by age and gender, 2014/15

Age	Grade 9-11								
	Dropout			Promotion			Repetition		
	M	F	T	M	F	T	M	F	T
12	25.5	27.8	26.6	41.8	42.6	42.2	32.7	29.6	31.2
13	15.3	6.5	10.7	66.4	76.5	71.6	18.3	17.1	17.7
14	16.2	10.4	13.3	64.6	80.0	72.3	19.2	9.7	14.4
15	19.6	13.3	16.5	59.6	76.4	67.8	20.8	10.3	15.7
16	26.0	18.8	22.6	52.1	70.1	60.6	21.9	11.1	16.8
17	31.9	25.8	29.1	48.4	63.4	55.3	19.7	10.8	15.6
18	36.5	36.3	36.4	43.0	53.3	47.3	20.6	10.4	16.3
19	43.9	42.0	43.2	39.9	49.8	43.7	16.2	8.2	13.2
Total	30.3	24.0	27.5	49.8	65.5	57.0	19.8	10.4	15.6

6. Elementary level: Zoba flow rates

Table 38. Elementary level: Average flow rates, 2014/15

		Grade 1-5			Grade 1			Grade 2			Grade 3			Grade 4			Grade 5		
		M	F	T	M	F	T	M	F	T	M	F	T	M	F	T	M	F	T
Eritrea	Drou	8.7	5.8	7.4	11.0	8.4	9.8	7.9	5.5	6.8	7.2	4.9	6.1	8.5	4.9	6.9	9.0	5.0	7.2
	Prom	82.5	87.7	84.9	83.1	86.7	84.8	85.7	88.9	87.2	87.8	91.0	89.2	73.6	82.7	77.6	81.9	89.3	85.3
	Repet	8.8	6.5	7.8	5.9	4.9	5.4	6.3	5.5	6.0	5.0	4.1	4.6	17.9	12.4	15.5	9.1	5.7	7.6
Anseba	Drou	7.8	5.5	6.7	10.1	8.2	9.2	6.0	4.9	5.5	6.3	4.3	5.4	7.6	5.0	6.4	9.4	5.0	7.4
	Prom	81.0	86.4	83.4	82.5	85.7	84.0	84.6	88.8	86.5	86.6	90.0	88.2	71.3	80.6	75.6	79.1	86.8	82.7
	Repet	11.3	8.1	9.8	7.4	6.1	6.8	9.4	6.3	8.0	7.0	5.6	6.4	21.1	14.4	18.0	11.5	8.2	9.9
Dehub	Drou	11.4	6.4	9.1	12.9	8.8	11.0	10.7	6.5	8.8	9.7	5.5	7.8	11.4	5.4	8.8	12.8	6.1	9.8
	Prom	82.4	90.0	85.8	86.9	91.0	88.8	89.1	93.4	91.1	90.2	94.5	92.1	68.9	82.2	74.7	77.9	88.5	82.6
	Repet	6.1	3.6	5.0	0.1	0.1	0.1	0.1	0.2	0.2	0.1	0.1	0.1	19.7	12.4	16.5	9.4	5.4	7.6
DKB	Drou	7.6	7.8	7.6	14.3	15.2	14.6	5.5	5.3	5.4	4.2	5.2	4.5	5.2	5.0	5.2	5.6	5.0	5.4
	Prom	75.1	72.0	74.2	65.2	61.4	64.1	74.0	69.2	72.5	78.6	74.8	77.4	78.7	76.9	78.2	86.9	90.5	87.9
	Repet	17.3	20.1	18.2	20.4	23.4	21.3	20.4	25.6	22.0	17.2	19.9	18.1	16.1	18.1	16.7	7.5	4.5	6.7
Gash-Barka	Drou	10.6	8.1	9.5	13.3	10.9	12.2	10.0	7.6	8.9	8.6	7.0	7.8	10.8	6.9	9.0	9.5	6.9	8.3
	Prom	78.5	81.2	79.7	77.0	79.9	78.3	79.8	81.0	80.4	82.9	84.0	83.4	71.5	76.7	73.8	81.5	85.8	83.4
	Repet	10.9	10.7	10.8	9.7	9.2	9.5	10.2	11.4	10.8	8.6	9.0	8.8	17.7	16.5	17.1	9.0	7.4	8.3
Maekel	Drou	2.3	1.6	2.0	2.8	2.3	2.6	1.9	1.3	1.6	2.3	1.3	1.8	2.2	1.6	1.9	2.6	1.5	2.1
	Prom	88.5	93.7	91.0	90.0	93.3	91.6	88.8	93.1	90.9	89.9	94.8	92.3	84.0	92.2	87.8	90.3	95.4	92.8
	Repet	9.1	4.7	7.0	7.1	4.4	5.8	9.4	5.6	7.5	7.8	3.9	5.9	13.9	6.2	10.3	7.1	3.1	5.2
SKB	Drou	8.7	7.4	8.2	13.7	12.5	13.2	8.2	6.5	7.5	6.1	5.7	5.9	7.5	5.9	6.8	7.5	6.1	6.9
	Prom	84.7	86.9	85.6	83.2	84.6	83.8	88.8	89.9	89.3	90.5	92.0	91.1	76.9	80.2	78.3	83.3	86.7	84.7
	Repet	6.6	5.7	6.2	3.0	3.0	3.0	3.0	3.5	3.3	3.4	2.3	2.9	15.6	13.9	14.9	9.3	7.2	8.4

7. Middle level: Zoba flow rates

Table 39. Middle level: Average flow rates, 2014/15

		Grade 6-8			Grade 6			Grade 7			Grade 8		
		M	F	T	M	F	T	M	F	T	M	F	T
Eritrea	Droust	16.2	9.1	13.0	14.5	7.3	11.4	16.2	8.2	12.6	18.1	11.5	15.0
	Promo	64.3	79.0	70.9	64.2	78.5	70.4	69.1	82.8	75.2	60.3	76.5	67.9
	Repet	19.5	11.9	16.1	21.3	14.2	18.2	14.7	9.0	12.2	21.6	12.0	17.1
Anseba	Droust	16.0	8.8	12.8	15.6	8.7	12.6	16.3	7.9	12.6	16.3	9.7	13.2
	Promo	60.4	75.6	67.3	58.5	74.5	65.5	63.9	79.2	70.7	59.6	73.9	66.3
	Repet	23.6	15.5	19.9	26.0	16.7	21.9	19.8	12.9	16.7	24.1	16.4	20.5
Debub	Droust	23.7	12.6	18.6	20.4	8.9	15.4	24.4	11.4	18.6	26.8	16.6	21.8
	Promo	58.4	77.0	66.9	60.4	77.9	68.1	61.7	80.3	70.0	53.3	73.8	63.4
	Repet	17.9	10.4	14.5	19.2	13.1	16.5	13.9	8.3	11.4	19.9	9.5	14.8
DKB	Droust	4.8	1.4	3.9	6.5	1.2	5.1	3.6	0.8	2.9	3.9	2.1	3.4
	Promo	76.8	82.6	78.3	72.6	74.1	73.0	85.2	93.5	87.1	72.8	83.4	75.8
	Repet	18.4	16.0	17.8	20.9	24.7	21.9	11.2	5.7	9.9	23.2	14.5	20.8
Gash-Barka	Droust	16.2	10.6	13.9	15.4	8.9	12.8	16.1	11.9	14.4	17.2	11.3	14.7
	Promo	57.4	67.7	61.6	56.7	67.7	61.2	64.3	72.9	67.8	52.2	63.5	57.0
	Repet	26.4	21.7	24.5	27.9	23.3	26.1	19.6	15.2	17.8	30.6	25.2	28.3
Maekel	Droust	7.2	3.4	5.4	6.4	2.5	4.6	6.9	2.6	4.8	8.6	5.0	6.8
	Promo	78.6	90.2	84.3	76.9	89.5	82.8	82.6	92.1	87.3	76.7	89.4	83.2
	Repet	14.2	6.4	10.4	16.6	8.0	12.6	10.5	5.3	7.9	14.7	5.6	10.1
SKB	Droust	11.5	10.0	10.9	10.8	10.3	10.6	11.0	9.0	10.3	12.5	10.5	11.7
	Promo	69.2	77.2	72.3	68.5	73.0	70.3	76.8	83.3	79.3	64.3	77.0	69.1
	Repet	19.3	12.7	16.8	20.7	16.7	19.1	12.2	7.7	10.4	23.2	12.5	19.2

8. Secondary level: Zoba flow rates

Table 40. Secondary level: Average flow rates, 2014/15

		Grade 9-11			Grade 9			Grade 10			Grade 11		
		M	F	T	M	F	T	M	F	T	M	F	T
Eritrea	Drout	30.3	24.0	27.5	29.3	15.9	23.6	29.7	21.4	26.0	32.8	37.0	34.9
	Promo	49.8	65.6	57.0	46.2	71.3	56.9	45.3	63.5	53.6	62.2	60.9	61.6
	Repet	19.8	10.5	15.6	24.5	12.8	19.5	25.0	15.1	20.5	5.0	2.1	3.6
Anseba	Drout	28.2	22.0	25.5	29.0	14.2	23.0	28.9	20.6	25.1	25.8	35.0	30.2
	Promo	45.4	61.5	52.5	38.0	65.0	48.9	40.4	56.7	47.8	67.9	63.2	65.6
	Repet	26.3	16.5	22.0	33.0	20.7	28.1	30.7	22.8	27.1	6.3	1.9	4.2
Debub	Drout	40.7	31.4	36.4	38.7	20.3	30.7	39.6	27.9	34.1	45.7	49.6	47.7
	Promo	38.4	56.7	47.0	36.7	66.6	49.7	33.0	54.6	43.1	49.3	46.8	48.0
	Repet	20.9	11.9	16.7	24.7	13.1	19.6	27.4	17.5	22.8	5.0	3.6	4.3
DKB	Drout	8.6	9.8	9.0	10.0	8.4	9.5	7.8	6.5	7.5	8.2	14.9	10.0
	Promo	76.0	77.9	76.5	63.3	74.0	66.7	74.3	76.1	74.7	91.8	85.1	90.0
	Repet	15.4	12.3	14.5	26.7	17.6	23.8	17.9	17.4	17.8	0.0	0.0	0.0
Gash-Barka	Drout	26.6	20.7	24.4	26.2	15.6	22.2	25.0	18.1	22.5	29.7	32.3	30.7
	Promo	50.6	69.2	57.6	47.7	73.5	57.4	45.3	65.8	52.5	63.9	66.1	64.8
	Repet	22.8	10.1	18.0	26.1	10.9	20.4	29.8	16.1	24.9	6.4	1.6	4.5
Maekel	Drout	24.5	19.5	22.0	23.0	12.5	18.1	25.2	17.2	21.2	25.6	29.0	27.5
	Promo	59.4	73.2	66.3	56.6	77.6	66.4	54.5	72.2	63.3	69.8	69.8	69.8
	Repet	16.0	7.4	11.7	20.4	9.8	15.5	20.2	10.6	15.4	4.6	1.2	2.8
SKB	Drout	22.1	16.4	20.3	20.8	13.6	18.6	18.0	16.0	17.4	30.6	22.3	28.1
	Promo	61.2	73.3	64.9	57.4	71.9	61.9	63.0	72.7	66.1	65.5	77.2	69.1
	Repet	16.7	10.3	14.7	21.8	14.5	19.5	19.0	11.3	16.6	3.9	0.5	2.9

9. Elementary level: Cohort Reconstruction

Figure 1-7 are constructed based on the actual flow rates of the 2014/15 academic year indicated in table 38.

Figure 1: Elementary level: hypothetical cohort reconstruction (Constant) Eritrea

	1	2	3	4	5		
2014/15	1000					Grades	Pupil-Yrs
	↓ 54					1	1057
						2	953
						3	871
2015/16	54	848				4	920
	↓ 3					5	772
						Total	4573
						Output	658
2016/17	3	96	739			Years input per graduate	6.9
	↓ 0					Coefficient of efficiency	0.72 72%
2017/18	0	8	118	660			
	↓ 0						Graduates
							↓
2018/19	0	1	13	208	512		437
2019/20		0	1	43	200		170
2020/21			0	8	49		42
		Drop-out					
	1000						
		Promotees					
Repeaters							
Survival by grade	1000	896	831	778	714		658

Table 41a. Elementary level: Wastage, survival, transition and completion rates by zoba

(Based on the 2014/15 flow rate and cohort reconstruction of each zoba)

Internal efficiency ratios		Total	ANS	DEB	DKB	GASH	MKL	SKB
1	Elementary level: Wastage ratio in elementary	1.39	1.41	1.45	1.52	1.55	1.15	1.38
2	Survival ratio for Grade 2	89.6	90.1	89.0	81.5	86.5	97.3	86.4
	Survival ratio for Grade 3	83.1	84.7	81.2	75.8	77.9	95.6	79.7
	Survival ratio for Grade 4	77.8	79.8	74.8	71.6	71.2	93.8	74.8
	Survival ratio for Grade 5	71.4	73.6	67.0	67.2	63.4	91.8	68.8
3	Transition ratio from elementary level to middle level	65.8	67.5	59.8	63.1	57.6	89.8	63.6
4	Transition ratio from middle level to secondary level	48.2	41.4	48.7	71.3	34.0	62.0	44.0
5	Elementary level: completion rate	73.6	68.6	96.3	41.1	56.1	87.4	48.1
6	Middle level completion rate	50.1	49.5	66.8	24.4	27.1	68.5	34.1
7	Proportion of total waste spent due to dropouts of elementary	72.3	66.2	84.5	48.7	69.5	45.2	76.7
8	Proportion of total waste spent due to repetition in elementary	27.7	33.8	15.5	51.3	30.5	54.8	23.3
9	Average length of study per graduate in elementary	5.4	5.6	5.3	6.0	5.6	5.4	5.4

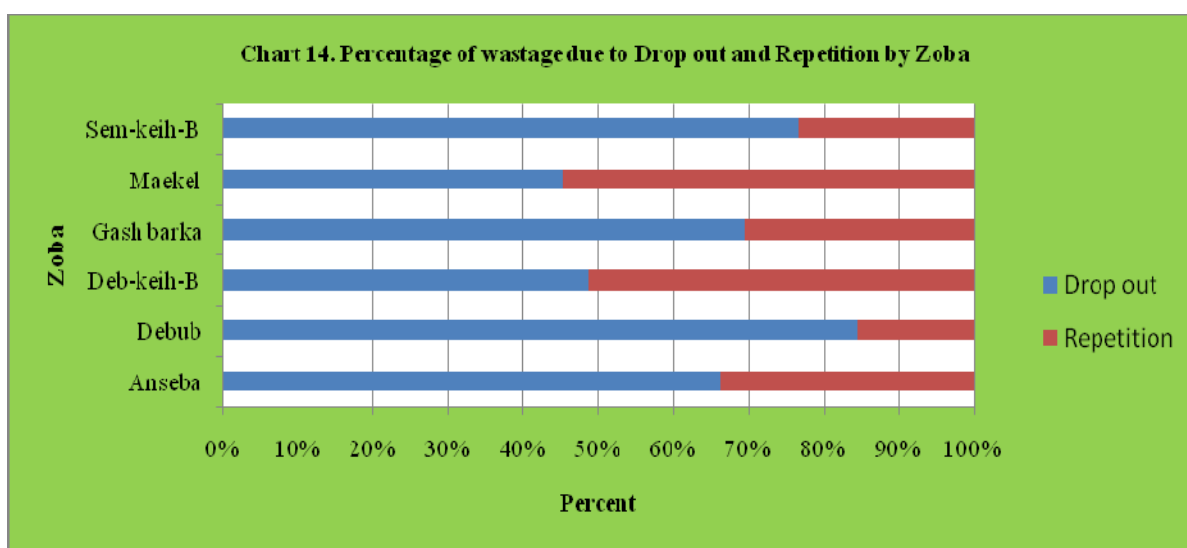
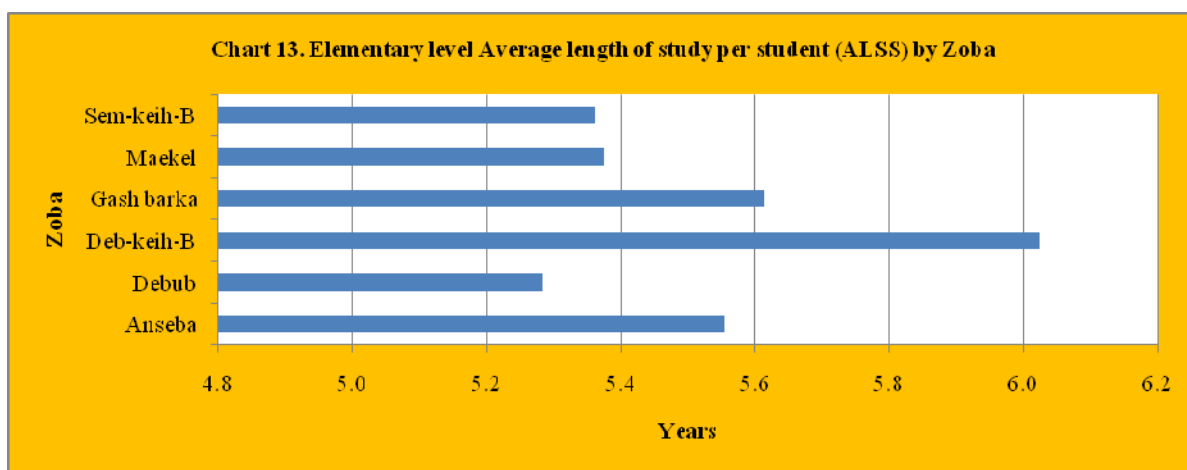


Table 41b. Elementary level: Wastage, survival, transition and completion rates of male by zoba

	Internal efficiency ratios	Total	ANS	DEB	DKB	GASH	MKL	SKB
1	Elementary level: Wastage ratio in elementary	1.49	1.51	1.62	1.51	1.64	1.19	1.41
2	Survival ratio for Grade 2	88.3	89.1	87.0	82.0	85.3	96.9	85.8
	Survival ratio for Grade 3	80.8	83.2	77.7	76.3	75.8	94.9	78.6
	Survival ratio for Grade 4	74.7	77.5	70.1	72.5	68.7	92.6	73.6
	Survival ratio for Grade 5	67.0	70.1	60.2	68.0	59.7	90.3	67.1
3	Transition ratio from elementary level to middle level	60.3	62.5	51.7	63.7	53.4	87.7	61.6
4	Transition ratio from middle level to secondary level	49.5	44.3	49.1	72.4	34.5	64.7	48.9
5	Elementary level: completion rate	74.1	65.9	97.2	57.2	57.5	85.6	52.7
6	Middle level completion rate	45.0	44.6	55.0	33.0	26.7	60.8	37.6
7	Proportion of total waste spent due to dropouts in elementary	73.5	66.9	85.3	49.8	71.8	43.2	77.0
8	Proportion of total waste spent due to repetition in elementary	26.5	33.1	14.7	50.2	28.2	56.8	23.0
9	Average length of study per graduate in elementary	5.5	5.6	5.3	6.0	5.6	5.5	5.4

Table 41c. Elementary level: Wastage, survival, transition and completion rates of female by zoba

	Internal efficiency ratios	Total	ANS	DEB	DKB	GASH	MKL	SKB
1	Elementary level: Wastage ratio in elementary	1.28	1.30	1.27	1.56	1.46	1.10	1.33
2	Survival ratio for Grade 2	91.1	91.3	91.2	80.1	88.0	97.6	87.1
	Survival ratio for Grade 3	85.8	86.5	85.3	74.5	80.4	96.3	81.2
	Survival ratio for Grade 4	81.5	82.5	80.6	69.7	74.3	95.0	76.5
	Survival ratio for Grade 5	76.9	77.7	75.7	65.5	68.1	93.3	71.3
3	Transition ratio from elementary level to middle level	72.9	73.4	70.8	61.9	63.1	91.9	66.6
4	Transition ratio from middle level to secondary level	46.7	38.0	48.3	69.1	33.2	59.3	36.6
5	Elementary level: completion rate	73.0	71.6	95.4	24.0	54.5	89.4	42.9
6	Middle level completion rate	55.6	55.0	79.6	15.2	27.6	76.7	30.1
7	Proportion of total waste spent due to dropouts in elementary	70.1	64.9	83.0	46.3	65.9	49.0	76.2
8	Proportion of total waste spent due to repetition in elementary	29.9	35.1	17.0	53.7	34.1	51.0	23.8
9	Average length of study per graduate in elementary	5.4	5.4	5.2	6.1	5.6	5.2	5.3

IX. Teaching staff: Elementary, middle and secondary level

Table 42. Teachers: Gender and level by zoba, 2014/15

Zoba	1-5			6-8			9-12			Total		
	T	M	F	T	M	F	T	M	F	T	M	F
Anseba	1,347	933	414	521	433	88	295	234	61	2,163	1,600	563
Debub	2,088	1,211	877	984	809	175	604	494	110	3,676	2,514	1,162
Deb-Keih-B	234	207	27	89	82	7	41	35	6	364	324	40
Gash-Barka	2,014	1,640	374	591	512	79	370	328	42	2,975	2,480	495
Maekel	1,774	679	1,095	1,025	763	262	1,105	781	324	3,904	2,223	1,681
Sawa							199	146	53	199	146	53
Sem-Keih-B	889	674	215	353	289	64	186	151	35	1,428	1,114	314
Total	8,346	5,344	3,002	3,563	2,888	675	2,800	2,169	631	14,709	10,401	4,308

1. Pupil/teacher ratio: Elementary, Middle and Secondary level

This ratio represents the average number of pupils per teacher at each level.

Table 43. Pupil /teacher ratio by year and level, 1993/94-2014/15

Year	Level								
	1-5			6-7			8-11		
	Pupil	Teacher	Pup/tea ratio	Pupil	Teacher	Pup/tea ratio	Pupil	Teacher	Pup/tea ratio
1993/94	208,199	5,272	39	32,781	978	34	32,756	1,015	32
1994/95	224,287	5,583	40	34,995	948	37	36,728	1,081	34
1995/96	241,725	5,828	41	39,751	992	40	39,188	1,039	38
1996/97	240,737	5,476	44	47,460	1,017	47	40,594	942	43
1997/98	247,499	5,799	43	57,152	1,162	49	41,615	959	43
1998/99	26,1963	5,576	47	67,021	1,208	56	47,533	982	49
1999/00	29,5941	6,229	48	74,317	1,312	57	57,334	1,047	55
2000/01	298,691	6,668	45	76,564	1,377	56	63,951	1,188	54
2001/02	330,278	7,498	44	80,882	1,529	53	70,183	1,419	50
2002/03	359,423	7,692	47	87,019	1,614	54	72,818	1,277	57
	1-5			6-8			9-12		
2003/04	374,997	8,033	47	122,966	2,241	55	69,401	1,645	43
2004/05	377,512	7,942	48	139,029	2,449	57	76,051	1,607	47
2005/06	364,263	7,711	47	148,082	2,491	59	77,644	1,552	50
2006/07	331,855	6,936	48	141,081	2,478	57	75,800	1,778	43
2007/08	314,034	7,311	43	144,031	2,704	53	83,411	1,811	46
2008/09	300,129	7,802	39	151,131	3,352	45	89,761	2,292	40
2009/10	286,021	7,535	38	151,702	3,680	41	95,076	2,472	38
2010/11	311,737	7,704	40	154,527	3,707	42	99,993	2,561	39
2011/12	334,245	8,166	41	167,928	3,867	43	95,152	2,845	33
2012/13	349,652	8,680	40	155,526	3,905	40	110,369	3,076	36
2013/14	361,604	9,023	40	152,005	3,882	39	115,422	3,177	36
2014/15	361,684	8,346	43	147,031	3,563	41	97,217	2,800	35

2. Teachers' qualifications

Teachers in the elementary level are considered professionally qualified if they are graduates of the TTI or have an equivalent / higher qualification.

Teachers in the middle level are considered professionally qualified if they have a qualification of higher education diploma (12+2) or have an equivalent or higher qualification. Teachers in the secondary level are considered professionally qualified if they have a minimum qualification of Bachelor degree.

Table 44. Teachers: Qualifications and level by year, 1993/94-2014/15

Year	Level								
	1-5			6-7			8-11		
	Total	qualified	Percent	Total	Qualified	Percent	Total	Qualified	Percent
1993/94	5,272	2,062	39.1	978	710	72.6	1,015	479	47.2
1994/95	5,583	2,675	47.9	948	661	69.7	1,081	507	46.9
1995/96	5,828	4,218	72.4	992	490	49.4	1,039	540	52.0
1996/97	5,476	3,747	68.4	1,017	446	43.9	942	527	55.9
1997/98	5,799	3,915	67.5	1,162	500	43.0	959	682	71.1
1998/99	5,576	4,058	72.8	1,208	459	37.9	982	715	72.8
1999/00	6,229	4,472	71.8	1,312	420	32.0	1,047	729	69.6
2000/01	6,668	4,699	70.5	1,377	486	35.3	1,188	869	73.1
2001/02	7,498	5,456	72.8	1,529	471	30.8	1,419	1,032	72.7
2002/03	7,692	6,194	80.5	1,614	507	31.4	1,277	870	68.1
	1-5			6-8			9-12		
2003/04	8,033	6,675	83.1	2,241	633	28.2	1,645	1,294	78.6
2004/05	7,942	6,640	83.6	2,449	708	28.9	1,607	1,311	81.6
2005/06	7,711	6,749	87.5	2,491	709	28.5	1,552	1,276	82.2
2006/07	6,936	6,039	87.1	2,478	911	36.8	1,778	1,524	85.7
2007/08	7,311	6,594	90.2	2,704	1,137	42.0	1,811	1,453	80.2
2008/09	7,802	7,197	92.2	3,352	1,825	54.5	2,292	1,794	78.3
2009/10	7,535	7,069	93.8	3,680	2,229	60.6	2,472	1,981	80.1
2010/11	7,704	7,005	90.9	3,707	2,563	69.1	2,561	2,125	83.0
2011/12	8,166	6,945	85.0	3,867	3,152	81.5	2,845	2,273	79.9
2012/13	8,680	6,932	79.8	3,905	3,365	86.2	3,076	2,461	80.0
2013/14	9,023	6,945	77.0	3,882	3,323	85.6	3,177	2,544	80.1
2014/15	8,346	6,309	75.6	3,563	3,049	85.6	2,800	2,203	78.7

3. Female teachers**Table 45. Number and Percentage of female teachers by level and year, 1993/94-2014/15**

Year	1-5			6-7			8-11		
	T	F	% of F	T	F	% of F	T	F	% of F
1993/94	5,272	1,865	35.4	978	140	14.3	1,015	104	10.2
1994/95	5,583	1,974	35.4	948	139	14.7	1,081	108	10.0
1995/96	5,828	2,025	34.7	992	156	15.7	1,039	103	9.9
1996/97	5,476	1,977	36.1	1,017	170	16.7	942	106	11.3
1997/98	5,799	1,893	32.6	1,162	170	14.6	959	113	11.8
1998/99	5,576	1,951	35.0	1,208	149	12.3	982	112	11.4
1999/00	6,229	2,330	37.4	1,312	167	12.7	1,047	109	10.4
2000/01	6,668	2,710	40.6	1,377	160	11.6	1,188	115	9.7
2001/02	7,498	2,873	38.3	1,529	177	11.6	1,419	145	10.2
2002/03	7,692	2,754	35.8	1,614	178	11.0	1,277	140	11.0
	1-5			6-8			9-12		
2003/04	8,033	2,887	35.9	2,241	216	9.6	1,645	215	13.1
2004/05	7,942	3,166	39.9	2,449	245	10.0	1,607	215	13.4
2005/06	7,711	3,350	43.4	2,491	314	12.6	1,552	204	13.1
2006/07	6,936	3,307	47.7	2,478	245	10.0	1,778	208	11.7
2007/08	7,311	3,241	44.3	2,704	258	10.5	1,811	210	11.6
2008/09	7,802	3,144	40.3	3,352	331	9.9	2,292	267	11.7
2009/10	7,535	3,079	40.9	3,680	485	13.2	2,472	314	12.7
2010/11	7,704	3,124	40.6	3,707	532	14.4	2,561	377	14.4
2011/12	8,166	3,318	40.6	3,867	632	16.3	2,845	457	16.1
2012/13	8,680	3,252	37.5	3,905	672	17.2	3,076	557	18.1
2013/14	9,023	3,367	37.3	3,882	727	18.7	3,177	641	20.2
2014/15	8,346	3,002	36.0	3,563	675	18.9	2,800	631	22.5

N.B. In secondary schools the pedagogic head, unit leader, and director are included as teachers.

X. Urban/Rural enrolment distribution

Table 46: Elementary Enrolment by zoba, location and percentage: 2014/15

Zoba	Rural			Urban			Total Percentage		
	T	M	F	T	M	F	Total	Rural	Urban
Anseba	33,427	18,310	15,117	18,259	9,709	8,550	51,686	64.7	35.3
Debub	82,592	46,075	36,517	35,832	18,898	16,934	118,424	69.7	30.3
Deb-Keih-B	3,996	3,093	903	1,664	926	738	5,660	70.6	29.4
Gash-Barka	59,254	32,778	26,476	24,858	13,102	11,756	84,112	70.4	29.6
Maekel	27,451	14,451	13,000	42,361	21,915	20,446	69,812	39.3	60.7
Sem-Keih-B	17,138	10,402	6,736	14,852	8,239	6,613	31,990	53.6	46.4
Totals	223,858	125,109	98,749	137,826	72,789	65,037	361,684	61.9	38.1

Table 47: Middle Enrolment by zoba, location and percentage: 2014/15

Zoba	Rural			Urban			Total Percentage		
	T	M	F	T	M	F	Total	Rural	Urban
Anseba	10,460	6,259	4,201	11,084	5,582	5,502	21,544	48.6	51.4
Debub	31,993	18,024	13,969	20,804	10,526	10,278	52,797	60.6	39.4
Deb-Keih-B	1,451	1,111	340	347	234	113	1,798	80.7	19.3
Gash-Barka	10,336	6,328	4,008	13,197	7,490	5,707	23,533	43.9	56.1
Maekel	11,996	6,052	5,944	23,731	12,097	11,634	35,727	33.6	66.4
Sem-Keih-B	3,876	2,754	1,122	7,756	4,425	3,331	11,632	33.3	66.7
Totals	70,112	40,528	29,584	76,919	40,354	36,565	147,031	47.7	52.3

Table 48: Secondary Enrolment by zoba, location and percentage: 2014/15

Zoba	Rural			Urban			Total Percentage		
	T	M	F	T	M	F	Total	Rural	Urban
Anseba	2,718	1,937	781	7,880	3,966	3,914	10,598	25.6	74.4
Debub	16,671	9,247	7,424	14,802	7,527	7,275	31,473	53.0	47.0
Deb-Keih-B	239	220	19	908	613	295	1,147	20.8	79.2
Gash-Barka	1,489	889	600	8,232	5,183	3,049	9,721	15.3	84.7
Maekel	7,904	3,896	4,008	20,506	10,320	10,186	28,410	27.8	72.2
Sawa	10,575	5,687	4,888				10,575	100.0	0.0
Sem-Keih-B	543	453	90	4,750	3,164	1,586	5,293	10.3	89.7
Totals	40,139	22,329	17,810	57,078	30,773	26,305	97,217	41.3	58.7

XI. Age-specific enrolment, 2014/15**Table 49. Age-specific enrolment, 2014/15**

Age	School age population		Pre-primary		Elementary		Middle		Secondary		Enrolment (%)	
	Total	Female	Total	Female	Total	Female	Total	Female	Total	Female	Total	Female
0	105,013	50,777										
1	114,633	55,767										
2	120,069	58,619										
3	121,799	59,573	346	166								
4	120,349	58,895	15765	7688								
5	111,413	54,416	22678	10927	713	356						
4-5	231,763	113,311	38,443	18,615	713	356					16.89%	16.74%
6	74,223	36,016	3132	1521	32800	15768						
7	70,453	34,089	178	80	57340	26758						
8	69,185	33,409	23	17	64900	30084						
9	67,979	32,761			66815	31307						
10	64,277	30,866			61960	28327	1352	678				
6-10	346,116	167,140	3,333	1,618	283,815	132,244	1,352	678			83.35%	80.50%
11	60,741	28,795			40926	17678	12997	6653				
12	62,589	29,711			21684	8515	27274	13230	50	29		
13	68,715	32,799			8988	3272	32289	15164	1565	765		
11-13	192,044	91,306			71,598	29,465	72,560	35,047	1,615	794	75.91%	71.52%
14	74,430	35,676			3735	1184	28681	12573	6703	3479		
15	80,847	38,882			1297	391	20602	8599	13768	6803		
16	84,660	40,897			425	123	12934	5204	18553	8811		
17	83,808	40,749			83	19	7511	2854	19815	8990		
14-17	323,745	156,204			5,540	1,717	69,728	29,230	58,839	28,083	41.42%	37.79%
18	79,889	39,161					2888	1030	17707	7767		
19	76,651	37,913							10816	4548		
20	73,454	36,740							8166	2911		
21	69,917	35,193							74	12		
22	66,259	33,257										
23	62,479	31,066										
24	58,482	28,809			18	4	503	164				
25	54,423	26,483										
26	50,307	24,364										
27	46,168	22,622										
28	42,178	21,192										
29	38,257	19,737										
30	34,175	18,195										
Tot	2,307,823	1,127,429	42,122	20,399	361,684	163,786	147,031	66,149	97,217	44,115		